

**Net ZERO millage increase  
from the current levy**



**HAZEL PARK  
SCHOOLS**

# Frequently Asked Questions (FAQs) For the May 7, 2024 Bond Proposal

## 1. When is the election?

Election Day is Tuesday, May 7, 2024. Polls will be open from 7 a.m. until 8 p.m. Absentee ballots will be available after March 28, 2024. Starting April 23, 2024, voters may cast a ballot at their assigned early voting site(s). They can look up their assigned early voting site(s) up to 60 days prior to Election Day at [Michigan.gov/Vote](https://Michigan.gov/Vote).

[Michigan.gov/Vote](https://Michigan.gov/Vote).

## 2. What is on the ballot?

On the ballot is a \$150 million school improvement bond proposal to be used for provide building & site improvements.

## 3. Why are bonds being sold in series?

The bonds will be sold in three series. Selling bonds in series reduces interest costs and overall cost of the financing or the school district.

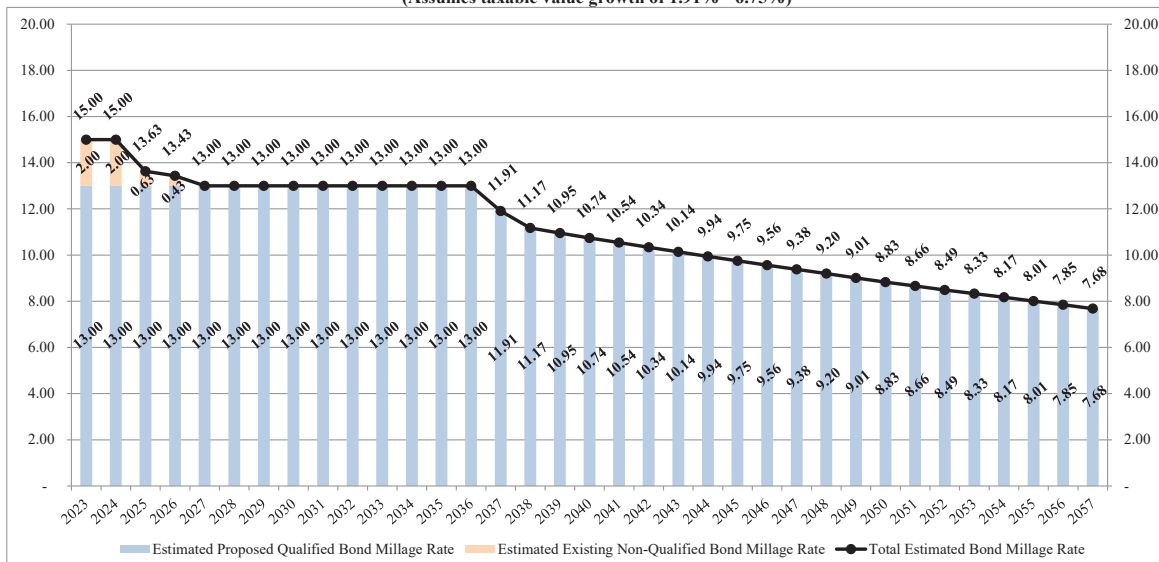
## 4. What type of projects will each series of bonds include?

The first series of the bond will address major facility needs, including safety and security enhancements and infrastructure improvements (heating, cooling, mechanical, electrical, and plumbing). The next two series of improvements will focus on updating aging facilities as well as constructing a new K-5 elementary building.

## 5. How will the bond proposal effect my taxes?

This bond proposal will extend the current millage for the entirety of the bond proposal, resulting in a **net zero mill increase from the current levy**. Additionally, as part of this bond proposal the millage be reduced to 13.63 mills in 2025 as illustrated in the chart below:

**ESTIMATED PROPOSED MILLAGE STUDY - CHART FORMAT**  
(Assumes taxable value growth of 1.91% - 6.75%)





**6. What restrictions are in place on how bond revenue can be spent?**

Every project in the bond proposal has been reviewed and approved by the Michigan Department of Treasury. All renovations and upgrades must comply with the Americans with Disabilities Act (ADA) and State of Michigan building codes. Bond proposal funds must be used only for purposes allowed by Michigan law and the ballot language. All project expenditures must be independently audited annually.

**7. How were the bond proposal projects identified?**

The school district completed an internal review of all school facilities as part of the school district's 3 to 5-year facility planning process. Following the internal review, an initial project list was developed.

After the internal review, school officials worked with architectural and construction management specialists to finalize the list of bond proposal projects to be addressed. Due to the age of school facilities, the cost of the initial project list totaled over \$300 million. Not wanting to bring a bond proposal to the community that required a millage increase, the project list was narrowed down to first address priority needs such as safety, security, and infrastructure issues.

All projects to be funded in this bond proposal fall into the following four categories:

- Enhancing safety and security**
- Remodeling classrooms to improve the learning environment**
- Updating mechanical/electrical/plumbing systems**
- Improving building exteriors/school sites**

**8. Why is a new K-5 elementary school being constructed?**

Due to its operational age, the renovation of Webster Early Childhood Center is more costly as compared to constructing a new building. Building a new facility will extend the building life expectancy for the school district and lower the lifetime operational costs with a more energy efficient building. A new building will be designed with learning spaces that meet today's educational needs of students and include up-to-date safety and security features.

**9. What input will parents and staff have regarding the design of the new elementary school?**

Yes. If voters approve the bond proposal, a building planning committee will be established that includes parent and staff representatives.

**10. Where will early childhood services be offered if the new elementary school replaces the Early Childhood Center?**

Hoover Elementary School will be the new site for early childhood services. This site was selected due to the size of the classrooms and the fact that many classrooms rooms also have restrooms attached.



**11. Can any of the bond proposal funds be used for employee salaries or operating expenses?**

No. Bond proposal funds cannot be used for employee salaries. They also cannot be used for repair or maintenance costs or other operating expenses. Bond proposal funds must be used only for purposes specified by law and in the ballot language. As required by state law, they must be independently audited.

**12. What will appear on the May 7, 2024 ballot?**

Here is the exact ballot wording:

**HAZEL PARK CITY SCHOOL DISTRICT  
COUNTY OF OAKLAND  
STATE OF MICHIGAN**

**SCHOOL IMPROVEMENT BONDING PROPOSAL**

Shall Hazel Park City School District, Oakland County, Michigan, borrow the sum of not to exceed One Hundred Fifty Million Dollars (\$150,000,000) and issue its general obligation unlimited tax bonds therefor, in one or more series, for the purpose of:

Constructing, equipping and furnishing a new school building, erecting, furnishing and equipping additions to and partially remodeling, furnishing and refurbishing, equipping and re-equipping school facilities; acquiring, installing, and equipping instructional technology for school facilities; constructing, equipping, developing and improving athletic facilities, playgrounds and play fields; and developing and improving sites.

The following is for informational purposes only:

The estimated millage that will be levied for the proposed bonds in 2024, is 5.65 mills (\$5.65 on each estimated \$1,000 of taxable valuation). The maximum number of years the bonds may be outstanding, exclusive of any refunding, is thirty (30) years. The estimated simple average millage anticipated to be required to retire this bond debt is 9.42 mills (\$9.42 on each \$1,000 of taxable valuation).

The School District expects to borrow from the State School Bond Qualification and Loan Program to pay debt service on these bonds. The estimated total principal amount of that borrowing is \$3,384,559 and the estimated total interest to be paid thereon is \$1,255,255. The estimated duration of the millage levy associated with that borrowing is 11 years and the estimated computed millage rate for such levy is 13 mills (\$13 per \$1,000 of taxable value). The estimated computed millage rate may change based on changes in certain circumstances.

The total amount of qualified bonds currently outstanding is \$31,890,000. The total amount of qualified loans currently outstanding is \$0.00.

Pursuant to State law, expenditure of bond proceeds must be audited, and the proceeds cannot be used for repair or maintenance costs, teacher, administrator or employee salaries, or other operating expenses.

**13. Who can vote in this bond proposal election?**

Residents of Hazel Park Schools who will be 18 years of age or older on Election Day and are registered to vote can vote in this election.

**Net ZERO millage increase  
from the current levy**



**HAZEL PARK  
SCHOOLS**

**14. Where can I get information about voting (such as how to register, where to vote, and absentee voting)?**

Go to the Michigan Voter Information website ([www.michigan.gov/vote](http://www.michigan.gov/vote)) or call your local clerk's office.

**15. Do I need to update my voter registration?**

You need to update your voter registration if you have changed your name or address since the last time you voted. You can do this at any Secretary of State Office or your local clerk's office.

**16. Can I vote by absentee ballot?**

Yes. Registered voters do not need a reason to vote by absentee ballot. You can request an absentee ballot application from your clerk's office or by going online to [www.michigan.gov/vote](http://www.michigan.gov/vote) and clicking on Absentee Voting in the left column.

**ABSENTEE BALLOTS WILL BE AVAILABLE TO VOTERS AFTER MARCH 28 AND CAN BE CAST THROUGH ELECTION DAY OR PARTICIPATE IN EARLY VOTING ON APRIL 23.**

**17. Where can I get more information about the bond proposal?**

Visit [www.hazelparkschools.org/hps-bond](http://www.hazelparkschools.org/hps-bond)

Contact Superintendent, Dr. Amy Kruppe

Phone: 248-658-5221

Email: [amy.kruppe@myhpsd.org](mailto:amy.kruppe@myhpsd.org)

**18. What projects will be completed at each facility?**

A summary of the proposed projects for each building is available on the follow page or head to the district website at: [www.hazelparkschools.org/hps-bond](http://www.hazelparkschools.org/hps-bond)

**Net ZERO millage increase  
from the current levy**



**HAZEL PARK  
SCHOOLS**

## Summary of Bond Proposal Projects 2024

New Elementary School (Webster ECC Replacement)	Early Childhood Center (former Hoover Elementary School)	United Oaks Elementary School	Webb Elementary	Jardon Vocational School
<p><b>New construction estimated 71,000 sf, K-5 elementary</b></p> <p>General Education Classrooms</p> <p>Young 5 classroom</p> <p>Kindergarten classrooms</p> <p>Special education resource room</p> <p>Self-contained rooms</p> <p>Media center and work room</p> <p>Gymnasium</p> <p>STEAM (Science, Technology, Engineering, Arts and Mathematics) lab</p> <p>Art classroom</p> <p>Kiln room</p> <p>Music room</p> <p>Full-service kitchen &amp; cafeteria</p> <p>Administrative offices with family room/pantry</p> <p>Conference room</p> <p>Playgrounds</p> <p>Parking</p>	<p><b>Safety &amp; Security</b> Construct a secured entry/reception area</p> <p>Replace interior / exterior doors and locks</p> <p>Install a new fire protection system</p> <p>Replace Public Announcement System</p> <p><b>Learning Environment</b> Replace select flooring</p> <p>Replace select ceiling areas</p> <p>Replace select interior walls</p> <p>Remodel restrooms</p> <p>Replacing classroom casework</p> <p>Replace select furniture</p> <p><b>Mechanical/ Electrical Systems</b> Replace heating &amp; cooling systems</p> <p><b>Exterior/Site Work</b> Replace roof</p> <p>Replace windows</p> <p>Outdoor Interactive Learning Space</p> <p>Upgrade playground</p>	<p><b>Safety &amp; Security</b> Construct a secure entry/administration area</p> <p>Replace exterior doors and locks</p> <p>Replace Public Announcement System</p> <p>Interior door locks</p> <p><b>Learning Environment</b> Replacing hallway flooring</p> <p>Replace select classroom furniture</p> <p><b>Exterior/Site Work</b> Replace roofing</p> <p>Upgrade playground</p>	<p><b>Safety &amp; Security</b> Upgrade secure entry</p> <p>Replace interior/ exterior doors and locks</p> <p>Replace Public Announcement System</p> <p><b>Learning Environment</b> Remodel restrooms</p> <p>Replace lighting</p> <p><b>Mechanical/ Electrical Systems</b> Upgrade heating &amp; cooling system</p> <p><b>Exterior/Site Work</b> Replace select windows</p> <p>Replace roofing</p> <p>Update outdoor interactive learning space</p> <p>Update playground</p>	<p><b>Safety &amp; Security</b> Construct a security entry</p> <p>Replace interior/ exterior doors and locks</p> <p>Replace Public Announcement System</p> <p><b>Learning Environment</b> Remodel restrooms</p> <p>Replace lighting</p> <p><b>Mechanical/ Electrical Systems</b> Upgrade heating &amp; cooling system</p> <p><b>Exterior/Site Work</b> Replace select windows</p> <p>Replace roofing</p> <p>Update outdoor interactive learning space</p>

**Net ZERO millage increase  
from the current levy**



**HAZEL PARK  
SCHOOLS**

## Summary of Bond Proposal Projects 2024, cont.

Hazel Park Junior High School	Hazel Park High School	Ford Advantage Alternative School & Administration Building	INVEST Roosevelt Alternative High School	Camp Hazelwood
<p><b>Safety &amp; Security</b> Construct a secure entry/administration area</p> <p>Replace exterior double doors and locks</p> <p>Replace interior doors and door locks</p> <p>Replace Public Announcement System</p> <p><b>Learning Environment</b> Replace carpet in the pods</p> <p><b>Exterior/Site Work</b> Replace roofing</p>	<p><b>Safety &amp; Security</b> Remodel the media center into a secured entry main office</p> <p>Replace exterior double door and locks</p> <p>Replace Public Announcement System</p> <p>Add emergency generator</p> <p><b>Learning Environment</b> Add a sound booth to the auditorium</p> <p>Replace theater lighting, audio, and video</p> <p>Remodel the existing administration area into a learning commons area</p> <p>Replace floors in hallways</p> <p>Remodel the welding room</p> <p><b>Mechanical/Electrical Systems</b> Replace heating and cooling systems throughout</p> <p><b>Exterior/Site Work</b> Replace roofing systems</p> <p>Replace select windows</p> <p>Replace turf and track, home bleachers, scoreboard &amp; pressbox</p>	<p><b>Safety &amp; Security</b> Secure entry for both buildings</p> <p>Replace interior and exterior doors and door locks</p> <p>Replace Public Announcement System</p> <p><b>Learning Environment</b> Construct a new gym addition with community access</p> <p>Replace select flooring</p> <p>Replace select ceilings</p> <p>Update select casework</p> <p>Convert the gym into a cafeteria</p> <p>Replace furniture</p> <p>Upgrade restrooms</p> <p><b>Mechanical/Electrical Systems</b> Update the electrical power source</p> <p>Update mechanical systems</p>	<p><b>Safety &amp; Security</b> Construct a secure entry</p> <p>Replace select windows</p> <p>Replace exterior double doors and locks</p> <p>Replace interior doors and locks</p> <p>Replace Public Announcement System</p> <p><b>Learning Environment</b> Remodel restrooms</p> <p><b>Mechanical/Electrical Systems</b> Update heating &amp; cooling systems</p> <p>Replace boiler</p> <p><b>Exterior/Site Work</b> Replace roof system</p> <p><b>Furnishing, Furniture &amp; Equipment</b> Replace classroom furniture</p>	<p>Update restrooms, showers, bunkhouses, lighting, and community spaces</p> <p>Update outdoor learning spaces</p> <p>ADA Accessibility improvements</p>



**Net ZERO millage increase  
from the current levy**



**HAZEL PARK  
SCHOOLS**

# Ballot Language Explained

HAZEL PARK CITY SCHOOL DISTRICT  
COUNTY OF OAKLAND  
STATE OF MICHIGAN

## SCHOOL IMPROVEMENT BONDING PROPOSAL

### **\$150 MILLION BOND**

The District would sell bonds totaling \$150 million which is required to be paid back within 30 years.

Shall Hazel Park City School District, Oakland County, Michigan, borrow the sum of not to exceed One Hundred Fifty Million Dollars (\$150,000,000) and issue its general obligation unlimited tax bonds therefor, in one or more series, for the purpose of:

### **PROPOSED PROJECT SCOPE**

You can view a comprehensive list of all the projects for each building on the district's website: [hazelparkschools.org/hps-bond](https://hazelparkschools.org/hps-bond)

Constructing, equipping and furnishing a new school building, erecting, furnishing and equipping additions to and partially remodeling, furnishing and refurbishing, equipping and re-equipping school facilities; acquiring, installing, and equipping instructional technology for school facilities; constructing, equipping, developing and improving athletic facilities, playgrounds and play fields; and developing and improving sites.

How much is estimated to be levied in 2024 to pay for this debt only.

The following is for informational purposes only:

Maximum number of years to pay off each series of this debt is 30 years.

The estimated millage that will be levied for the proposed bonds in 2024, is 5.65 mills (\$5.65 on each estimated \$1,000 of taxable valuation). The maximum number of years the bonds may be outstanding, exclusive of any refunding, is thirty (30) years. The estimated simple average millage anticipated to be required to retire this bond debt is 9.42 mills (\$9.42 on each \$1,000 of taxable valuation).

9.42 is the average expected mills to repay only this debt (stand alone cost).

The bond is a **zero net mill increase** for residents from the current levy. Refinancing the total mills levied will result in a 2 mill decrease from 15 mills to 13 mills to the current tax rate.

The School District expects to borrow from the State School Bond Qualification and Loan Program to pay debt service on these bonds. The estimated total principal amount of that borrowing is \$3,384,559 and the estimated total interest to be paid thereon is \$1,255,255. The estimated duration of the millage levy associated with that borrowing is 11 years and the estimated computed millage rate for such levy is 13 mills (\$13 per \$1,000 of taxable value). The estimated computed millage rate may change based on changes in certain circumstances.

Hazel Park Schools' current debt that is qualified through the State of Michigan.

The total amount of qualified bonds currently outstanding is \$31,890,000. The total amount of qualified loans currently outstanding is \$0.00.

Pursuant to State law, expenditure of bond proceeds must be audited, and the proceeds cannot be used for repair or maintenance costs, teacher, administrator or employee salaries, or other operating expenses.