



Webb Happenings Newsletter

Corri Nastasi, Principal

corri.nastasi@hazelparkschools.org

248-658-5900

September 4, 2023



Important Dates

9/1/23-9/4/23 - No School - Labor Day Weekend

9/7/23 - Webb Meet the Teacher Night 6-7:30PM

9/11/23 - Webb PTA Meeting

9/25/23 - No School for Students - Professional Development Day for staff

9/28/23 - $\frac{1}{2}$ day of school - students dismissed at 11:20am - Records Day for staff

From the Principal

Dear Webb Families,

The first few days are past us. During the week ahead many of our teachers will be focused on setting up the structure of their classrooms (including routines, schedules, procedures, etc.) and working to build relationships with the students. Another important focus for this week is building relationships with the families/grown ups that support our students. Our first move in this direction starts with our annual "Meet the Teacher" Night this Thursday at Webb.

Meet the Teacher Night will start at 6PM. This year we are trying something different to help encourage attendance - we are inviting the whole family along. We will have bounce houses and activities in the gym for the Webb students and a 3 & 4 year old room for some of our younger siblings. During this time, grown ups will be able to attend the individual teacher sessions to meet the teacher and get important information about the classroom and school year ahead. When our individual sessions are done around 7:15, we then invite you out front for an ice cream social. The playground will be open for families to play and we will have ice cream for all. We hope you are able to make this a priority for your family. We want to partner with you in your child's education and this event will help to kick that off for us and for you. Please feel free to reach out to the school office with any questions about this event (248)658-5900.

Sincerely,

Corri Nastasi

Principal, Webb Elementary

School Website

You can find valuable information for our school and district at www.hazelparkschools.org. From there you can find Webb Elementary or you can go directly to our school website at <https://www.hazelparkschools.org/schools/elementary/webb-elementary/>.

Latch Key

Latch Key will be offered to Webb students before and after school. Please go to https://schoolcareworks.com/registration/hazelparkschools/start_registration.jsp to register for latch key online and to get any updated information. If you have questions that are not answered at this webpage, please call 248-658-5913.

Meet the Teacher Night

We will have our annual Meet the Teacher Night on Thursday, September 7th from 6-7:30PM in person at Webb. This is a great opportunity to meet the teacher(s), learn important information about the classroom and school year and ask any questions you might have. The whole family is invited. We will have activities for students ages 3 & up as well as an ice cream social out front for all families. We hope to see you all there. All of our staff will be there to answer any questions you might have about the school year ahead. Hope to see you there!

Webb Facebook Page

Please consider joining our Webb Facebook page online. This is a great place where you can get updated information on what is happening at Webb and across the district as well as pictures from events at school, etc. Please note that this is a place to see what is happening at school NOT a place to ask questions. We do not monitor it regularly to check for and respond to questions/concerns.

Volunteer/iChat Forms

We will be welcoming parent volunteers back into school this year. If you are interested in being a volunteer in school for parties, special events, field trips, etc. please fill out a background check form (below). Any adult coming in to the building will need to have a background check on file. This takes about a week to clear, so the sooner you do it the better. Many times parents wait until it is too late and then there isn't time to get cleared to attend a special event. Forms can be printed and filled out below or you can pick one up in the school office. Please note that we will need a copy of a valid driver's license to be able to put the background check through the system.

PTA

We are in need of individuals who are interested in supporting our PTA this year. Every little bit helps. Everyone is welcome to join us. We will have our first meeting at Webb on Monday, September 11th at 3:30PM in the Webb Media Center.

Medication Forms

If your child will need to take any medication at school, please pick up a medication form in the school office or download them from the district website. We cannot administer any medication without that form which also needs to be signed by your child's physician.

Attendance

Consistent attendance at school is so very important and necessary for your child to grow academically. This is especially important in elementary school where they are learning critical foundational skills that will impact their learning for years to come. Please make consistent attendance a priority for your family starting at the very beginning of school. When looking into our school academic data we were able to see that our lowest performing students are often those with poor attendance. When they don't consistently attend school, your child can quickly fall behind in these early years which increases their chances of dropout in the future. We will do anything we can to support you in this work.



Help Your Child Succeed in School: Build the Habit of Good Attendance Early

DID YOU KNOW?

- Starting in preschool and kindergarten, too many absences can cause children to fall behind in school.
- Missing 10%, or about 2 days each month over the course of a school year, can make it harder to learn to read.
- Students can still fall behind if they miss just 1 or 2 days every few weeks.
- Being late to school may lead to poor attendance.
- Absences and tardiness can affect the whole classroom if the teacher has to slow down learning to help children catch up.

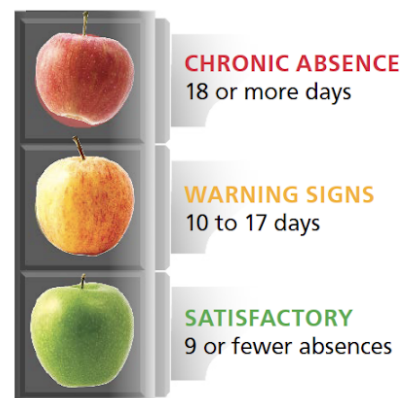
Attending school regularly helps children feel better about school—and themselves. Start building this habit in preschool so they learn right away that going to school on time, every day is important. Eventually good attendance will be a skill that will help them succeed in high school and college.

WHAT YOU CAN DO

- Set a regular bedtime and morning routine.
- Lay out clothes and pack backpacks the night before.
- Keep your child healthy and make sure your child has the required shots.
- Introduce your children to their teachers and classmates before school starts.
- Develop backup plans for getting to school if something comes up. Call on a family member, a neighbor or another parent.
- Try to schedule non-Covid-19 related medical appointments and extended trips when school isn't in session.
- If your child seems anxious about going to school, talk to teachers, school counselors and other parents for advice on how to make your child feel comfortable and excited about learning.
- If you are concerned that your child may have Covid-19, call your school for advice.
- If your child must stay home due to illness or quarantine, ask the teacher for resources and ideas to continue learning at home.

Revised October 2021

When Do Absences Become a Problem?



Note: These numbers assume a 180-day school year.

Visit Attendance Works at www.attendanceworks.org for free downloadable resources and tools!

Lunch Menu

Don't forget that breakfast and lunch is free for all of our Webb students. You can find the school menu including all available items at:

<https://hazelparkschools.nutrislice.com/>

The lunch menu is also listed below:



What's on the Menu?

September Lunch Menu

Monday	Tuesday	Wednesday	Thursday
Aug 28 No School 	29 No School	30 ½ Day	31 Choice #1 WG Bosco Sticks w/Marinara Sauce Choice #2 WG Pepperoni Pizza Veg: Potato Wedges
4 No School	5 Choice #1 WG Pulled Pork Sandwich Choice #2 WG Chicken Nuggets w/WG Dinner Roll Veg: Roasted Broccoli	6 Choice #1 Grilled Chicken w/WG Dinner Roll Choice #2 WG Mac & Cheese w/WG Dinner Roll Veg: Roasted Asparagus	7 Choice #1 WG Walking Tacos w/Salsa Choice #2 WG Chicken Sandwich Veg: Roasted Carrots
11 Choice #1 WG Lasagna w/WG Breadstick Choice #2 WG Cheeseburger Veg: Brussel Sprouts	12 Choice #1 WG Tacos w/Salsa Choice #2 WG Chicken Nuggets w/WG Dinner Roll Veg: Mexican Black Beans	13 Choice #1 WG Breaded Chicken Drumstick w/Cornbread Choice #2 WG Mac & Cheese w/WG Dinner Roll Veg: Seasoned Corn	14 Choice #1 WG Fish Sticks w/WG Dinner Roll Choice #2 WG Chicken Sandwich Veg: Roasted Broccoli
18 Choice #1 WG Sweet & Sour Chicken w/Rice & WG Dinner Roll Choice #2 WG Cheeseburger Veg: Broccoli	19 Choice #1 WG Ham w/Cornbread Choice #2 WG Chicken Nuggets w/WG Dinner Roll Veg: Asparagus	20 Choice #1 WG Chicken Fajita w/Salsa Choice #2 WG Mac & Cheese w/WG Dinner Roll Veg: Mexican Black Beans	21 Choice #1 WG Hot Dog Choice #2 WG Chicken Sandwich Veg: Roasted Carrots
25 No School	26 Choice #1 WG Taco Wedges w/Salsa Choice #2 WG Chicken Nuggets w/WG Dinner Roll Veg: Seasoned Corn <i>*Johnny Appleseed Day*</i>	27 Choice #1 Meatballs in Pasta Sauce w/Breadstick Choice #2 WG Mac & Cheese w/WG Dinner Roll Veg: Roasted Broccoli <i>*National Chocolate Milk Day*</i>	28 ½ Day
	29 Choice #1 WG Mozzarella Sticks w/Marinara Choice #2 WG Pepperoni Pizza Veg: Sweet Potato Bites		

FREE Meals for All Students!

For the upcoming 2023-24 school year Hazel Park Schools is participating in the Community Eligibility Program (CEP), serving meals to students at no cost and without the need for families to complete meal applications. This means students will have the opportunity to enjoy free breakfast and free lunch throughout the academic year.

For Hazel Park Schools, it is important to note that families should still complete the CEP Education Benefits Form, which helps ensure ongoing state funding and can qualify your child's school or community for other special programs. CEP offers a great opportunity for everyone to eat together in the cafeteria and hopefully make it easier for students and families to confidently check breakfast and lunch off their list. We're excited to serve even more students in the Hazel Park community this year, helping to fuel busy days with favorite menu items and a variety of delicious new recipes!

nutrislice

Menus are available to view at hazelparkschools.nutrislice.com



HAZEL PARK SCHOOLS

chartwells
serving up happy & healthy

Daily 3rd Choice Turkey Ham & Cheese Sandwich

Supplement your lunch from home with a milk, fruit, & vegetable for free!
Must take all 3 items

Assorted Fresh Fruit & Veggie Bar Available Daily

A full student lunch includes a choice of entrée supplying protein, milk, grain, vegetable and fruit side dishes
 Milk Choices include: Flavored and unflavored 1% milk
 Every student must receive a full serving (1/2 Cup) of FRUIT or VEGETABLE to qualify for a reimbursable meal.
 Contact Dan Wrobel with any questions at (248)658-5995 or daniel.wrobel@myhpsd.org
 This institution is an equal opportunity provider

Arrival Procedures

School starts at 8:10AM. Classrooms are open inside of school starting at 8:05AM. We do offer free breakfast before school for those who would like it. Students may come into the building starting at 7:40AM **ONLY IF THEY ARE COMING TO EAT THE BREAKFAST PROVIDED BY THE SCHOOL**. If students do not eat breakfast at school or have their own breakfast, they **CANNOT** come in until 8:05AM. Students may **NOT** be dropped off before 7:40AM. If your child walks, they must wait off of school grounds until 7:40AM. We do not have supervision before that time and cannot be responsible for students outside of school. The doors open at 7:40AM for breakfast and that is the first time students may enter. Breakfast closes at 8:00AM. At that time any students arriving, will be asked to wait in the school lobby until the 8:05 bell rings. **All students not eating breakfast will need to wait in cars or off property until 8:05AM**. Please note that we expect any students arriving early for breakfast to be eating and following directions. There will be a three strikes rule for breakfast. If there are 3 behavioral issues during breakfast your child will not be allowed to come in early for breakfast. As always, we will have bag breakfasts for any child coming into school after breakfast closes in the morning. Students can pick them up at the front door and take it to class to eat.

Dismissal Procedures

All students will be dismissed from their exit doors at 3:10PM. If your student will be walking, please let the teacher know and he/she will dismiss them to walk at that time. We will do our best to help ease traffic in the parking lot. Parking is allowed along the curb. Please treat this as a parallel parking situation. We ask that if you choose to park along the curb you leave the two crosswalks free so that families/students can use those areas to cross to the parking lot. As always, please drive carefully so that we can keep everyone safe.

- Grades K-1 will exit from the side doors by parking lot.
- Grades 2-4 will exit from the front main doors.
- Grade 5 will exit the front door just past the main entrance

Please note that you **CANNOT** wave your child into lanes of traffic to get into the car. It is much too dangerous and stops the flow of traffic. You **MUST** park in one of the spots in the lot or along the curb. Children cannot be dismissed to cross lanes of traffic to go to a car in the parking lot. Adults **MUST** walk up to the school to get students if they are parked in the lot. **ALL** K-2 students **MUST BE** picked up from their class dismissal line by an adult or an older sibling (please communicate that to the teacher).

School Calendar

An updated Webb calendar for the year is listed below for your convenience.

welcome to the

Artist Studio

September 2023

From the teacher Mrs. McClenahan:

I am thrilled to be back with my Webb students this year! I am also super pleased to share with you that I will be here full time!! This means more Art will be made, displayed, and shared with our school family. My job will always be to inspire and to provide a safe place for my students to express themselves in the Art room.



Projects & Focus:

Students will be introduced to Mona Lisa and Bob Ross whom are our Art Room mascots.

We'll practice being respectful and using a positive growth mindset.

All Webb students will work on a school wide collaborative mural: Bee Positive, Bee Respectful, Bee Kind."

Student Voice:

I will share thoughts and ideas of some of my most amazing artists here.

welcome to the

Artist Studio

September 2023

Highlights:



Above: Walking into the Art Room



Above: Leaving the Art Room

Requests:

Our Studio is always in need of these donated items:

- cleaning wipes
- baby wipes (for hands)
- magazines & newspapers
- t.p. / paper towel rolls
- Legos for creative play

email me at:

courtney.mcclenahan@myhpsd.org

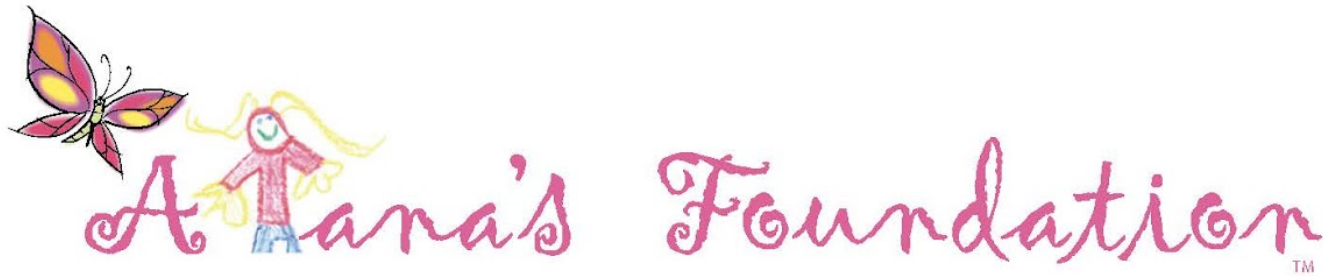
Student Voice:



[mrs.monalisa_artteacher](https://www.instagram.com/mrs.monalisa_artteacher)

Instagram page

Check out highlights from class. Student artwork will be highlighted weekly.



Presents

Flu Vaccination Clinic



WHEN:

Tuesday, September 26
3:00 PM -5:00 PM

WHERE:

Hazel Park High School
23400 Hughes Ave.
Hazel Park, MI 48336

ALL attendees MUST complete an online consent *

COMPLETE CONSENT TO PRE-REGISTER*.

GO TO:

<https://alanas.vna.org>

ENTER:

Clinic ID: **1827** | Passcode: **ALANAS2023**

SEARCH by clinic date



Children 17 and under **must** have consent
form completed by parent/guardian

- Cost:
 - o Insured - bring a copy of your insurance card.
 - o **Uninsured/Underinsured** - Alana's Foundation subsidizes
- Quadrivalent injectable flu vaccine is available for ages 2+
- *Pre-registration ensures adequate vaccine supply. Participants serviced first come, first served.
- Face masks are optional for vaccine recipients.

Flu vaccinations administered by
Michigan Community
Visiting Nurse Association



Questions:

info@alanafoundation.org ~ www.AlanasFoundation.org

Hazel Park District Library

Baby Story Time



Wednesdays, 1:00 pm

(Older siblings are welcome)

No storytime August 23

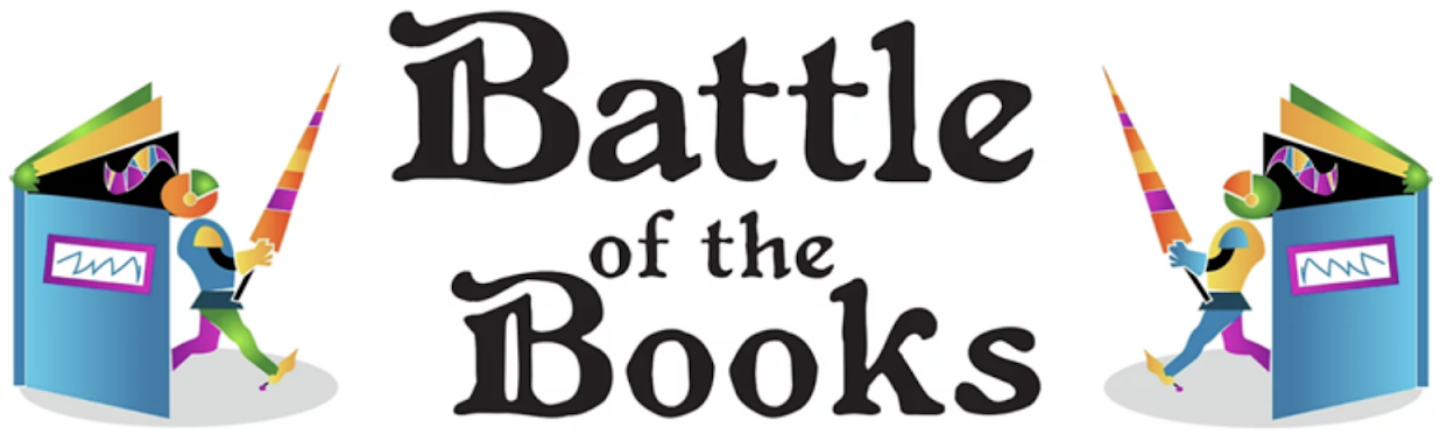
Baby Story Time supports early literacy and language skills by encouraging singing, playing, talking, and shared reading.

Join us for fun stories, finger plays, and snuggling in a welcoming environment! This FREE program is geared toward babies, but older siblings are welcome.



123 E Nine Mile
Hazel Park, MI 48030
<http://hazel-park.lib.mi.us/>
248-546-4095

Hazel Park District Library



**Come to the library,
sign up & form teams
NOW!!**

**Win prizes, eat pizza
and have a great time!**

If you have questions, contact Amy or Randy at
248-546-4095 or abeem@hazel-park.lib.mi.us



3 battles: Grades 3-5, 6-8, & 9-12

HAZEL PARK
DISTRICT
LIBRARY

BOOK SALE!

SEPTEMBER
5-9

Tuesday 12-8
Wednesday 12-8
Thursday 12-8
Friday 10-6
Saturday 12-4



**FUNDS RAISED FROM THIS BOOK SALE SUPPORT
PROGRAMMING AND THE PURCHASE OF NEW MATERIALS.**

HAZEL PARK DISTRICT LIBRARY

Harry Potter

Free!

PARTY

**SATURDAY, NOVEMBER 4
1-3 PM**

REGISTRATION IS HIGHLY RECOMMENDED

COME DRESSED AS YOUR FAVORITE CHARACTER OR HOUSE!

FEATURES:

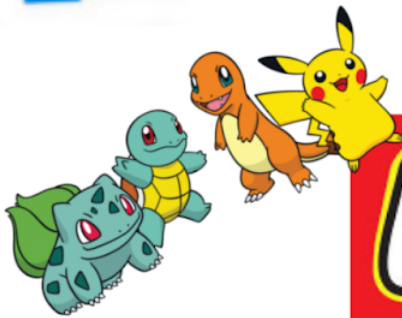
- Bertie Bott's jelly bean tasting
- Butter Beer & Chocolate Frogs
- Games & Crafts
- Potions and Wand lessons
- Sorting Hat
- Photo Booth



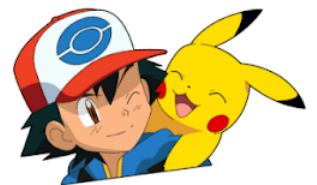
123 E. 9 Mile Rd Hazel Park, MI 48030 248-546-4095

Hazel Park District Library

POKÉMON
&



LEGO CLUB



**SEPTEMBER 5, OCTOBER 3 ,
NOVEMBER 7, DECEMBER 5**

Legos, craft & games, oh my! We will build with Legos and display our masterpieces in the Library. Bring your Pokemon cards. You can battle with friends, play the card game and do crafts.



HAZEL PARK DISTRICT LIBRARY



GOTTA CATCH 'EM ALL!

Thursdays at 6:30 PM

August 24: Red Oaks Nature Center

(30300 Hales St, Madison Heights, MI 48071)

September 7: Harding Park

(989 Mapledale Ferndale, MI 48220)

September 21: Scout Park

(901 E Otis Ave Hazel Park MI 48030)

October 5: Rosie's Park:

(1111 E Farnum Ave, Madison Heights, MI 48071)

October 19: Martin Rd Park:

(1615 E Lewiston Ave, Ferndale, MI)

November 9: Harding Park

(989 Mapledale Ferndale, MI 48220)

**Join us to catch Pokemon and battle.
Everyone will get 1 FREE Pokemon card.**

The Hazel Park District Library Summer Reading Picnic has been rescheduled.

Here's the scoop!



SUMMER READING PARTICIPANTS ARE INVITED TO AN

ICE CREAM SOCIAL

PLEASE CALL TO REGISTER!

SEPTEMBER
28TH

HAZEL PARK
DISTRICT LIBRARY
248-546-4095

6:00 PM

Hazel Park Library

Tiny Tales

Storytime

Free!

Fridays 10:30am

Ages 0-5 (Older siblings are welcome)

We read stories, do fun fingerplays, sing songs, play, color, and letter recognition games. Sometimes we will be doing a craft that you can pick up from the library. Join us for a fun time and develop literacy, language, and social skills as well as positive associations with reading and the library.

(No storytime Sept 1, Nov 10 & 24, Dec . 22 & 29)



123 E Nine Mile
Hazel Park, MI 48030
<http://hazel-park.lib.mi.us/>
248-546-4095