



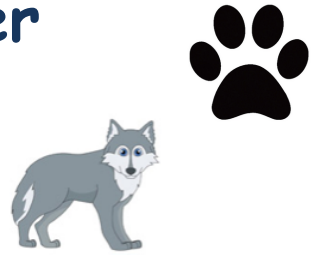
# Webb Happenings Newsletter

Corri Nastasi, Principal

[corri.nastasi@hazelparkschools.org](mailto:corri.nastasi@hazelparkschools.org)

248-658-5900

September 18, 2023



## Important Dates

9/19/23 - Bagel Day

9/25/23 - No School for Students - Professional Development Day for staff

9/28/23 -  $\frac{1}{2}$  day of school - students dismissed at 11:20am - Records Day for staff

10/5/23 - Webb Math Night

10/26/23 - Student of the Month Breakfast

10/31/23 -  $\frac{1}{2}$  day of school - students dismissed at 11:20am - Records Day for staff

10/31/23 - Webb Halloween Parade - 10:30AM

## From the Principal

Dear Webb Families,

Last week we had our PBIS kickoff assembly. PBIS stands for Positive Behavior Interventions and Supports. This is the program we use to support good behavior at Webb. During the first few weeks of school and the first weeks when we return from school breaks we explicitly teach expectations around the school - in classrooms, assemblies, hallways, bathrooms, the school office, playground, cafeteria, etc. This helps the kids to know and understand what is expected of them wherever they go. These expectations are clearly posted around the building and in each classroom. All of the expectations fall under 4 categories:

**W**e do our Best

**E**veryone is Safe

**B**e Respectful

**B**e Responsible

The acronym of these expectations spells out WEBB and our battle cry is We are WEBB! We reinforce these expectations by handing out WEBB tickets when students are following those expectations and making good choices.

Once a month we meet in the gym for an assembly where we celebrate a month of accomplishments. We have a big raffle with all of our WEBB tickets and we determine if we met our monthly school goal for tickets. If we do, then we have some sort of behavior celebration. This is how we encourage and support positive behavior at Webb.

Sincerely,

*Corri Nastasi*

Principal, Webb Elementary

## Fundraiser

On Thursday we had a kickoff assembly for a fundraiser the PTA is sponsoring at Webb and the packets went home with the students. The students are able to sell the products in the catalog until September 26. At that time all orders and money are due. All items will be delivered to Webb. We appreciate any help you can give us with this sale. All proceeds support events for Webb students and families.

## I-Ready Testing

This week the K-3rd grade students will begin I-Ready testing and next week our 4th and 5th graders will begin. Students will take these standardized assessments in both reading and math. The data from these assessments, which are taken 3 times each year, helps us to make important decisions about students and instructional practices. Please encourage your child to do his/her best on these tests.

## Bagels

Every Tuesday is bagel day at Webb. Students and staff can buy bagels for \$1 each. The flavors offered are cinnamon raisin, plain, salt & onion.

## Early Dismissal

Please remember our district policy states we cannot dismiss students after 2:30PM. It is very disruptive to the learning that is happening in the classrooms and the end of the day routines. If you have a doctor appointment and need your child to leave early, please come before 2:30PM.

## Playground

Please remember that students CANNOT play on the playground after school unless an adult accompanies them. The adult has to be physically on the playground with the child. They cannot be sitting in the car in the parking lot. After dismissal, the adult who picks them up is responsible for behaviors by any students in their care.

## Late Pick-Up Procedures

Here is another excerpt from the HP Student Handbook regarding our late pick up procedures:

### *Late Pick-Up Procedures*

*As a reminder, dismissal times for our elementary buildings are 3:10 pm or 11:20 am on half days unless your child regularly attends latchkey. While life's complex circumstances may occasionally get in the way of a timely pick-up, it is important that you contact your school office and let them know you are running late.*

*Any student who is **not picked up by 3:30 pm** will be placed in the Late Pick-Up Room. The Late Pick Up Room will be **staffed from 3:30 pm - 4:30 pm**. Starting at **3:30 pm**, a **\$10.00 fee** will be charged for **every 15 minutes** your child is in the late pick-up room. If you have more than one child, the fee will be applied to each child. We understand that a situation may occur that will impact your ability to pick your child or children up on time. Therefore, we have built some flexibility into the fees that will be charged. The fees will be charged as outlined in the table below.*

<i>First Late Pick-Up</i>	<i>No Fee</i>
<i>Second Late Pick-Up</i>	<i>Fee Applied (unless extreme emergency as approved by Principal)</i>
<i>Third Late Pick-Up</i>	<i>Fee Applied (up to 4:30 pm - *see note below) and follow-up phone call from the building principal</i>
<i>Four or More Late Pick-Ups</i>	<i>Fee Applied (up to 4:30 pm - *see note below) and meeting with the building principal</i>

***\* If a student is not picked up by 4:30 the Hazel Park or Ferndale Police will be contacted.***

*If you are unable to pick up your child on time, it is imperative that you have an alternative plan for daily dismissal, as the office staff is not equipped to provide after school care. If you are interested in our after-school latchkey program, please check our school website for enrollment information.*

### **Student Dismissal**

Just a reminder to our parents (especially for our younger classes) to give teachers a bit of space as they dismiss students at the end of the day. It is critical that they are able to focus and make sure students are being picked up by the right adult. Please do not approach teachers with questions/concerns until most students have left and the teacher is able to divide her attention safely.

### **Student Arrival**

I want to remind you that I would like for everyone to stay in their cars until 7:40AM unless your child goes to latchkey. We do NOT have any supervision in place before this time and if we have a crowd around the front door it is very hard to determine which children are or are not with which adults. Please remain in cars or across the street until 7:40AM. Walkers should stay at the edge of the property until 7:40AM as well. Thank you for your cooperation with this.

### **Riding Bikes to School**

Please see this excerpt from our Student Handbook regarding riding bikes to school:

#### ***Bike Rules & Regulations - Elementary***

*Elementary students will be allowed to ride bikes to school; While we encourage our bike riders to be in grades 4 & 5, it is up to the discretion of parents whether or not their child will be allowed to ride a bike.*

- *Scooters will not be permitted.*
- *Bikes must be locked to the bike rack; The school is not liable for any stolen bikes.*
- *Student bike riders must wear helmets.*
- *Students must walk their bikes, once on school grounds.*
- *Noncompliance with rules on school property, may mean the suspension of bike riding privileges.*

- *The district will offer a bike safety class/ride in the spring.*

*If students do not bring a lock to school, the bike will be brought inside the building and one warning will be given. After that, parents will need to pick up the bike.*

*If a student does not wear a helmet to school, the student will receive one warning. After that, parents will need to pick up the bike.*

*If a student has three violations regarding locks or helmets, the student will lose the privilege and can no longer ride a bike to school.*

### **Cell Phones**

We want to make you aware that students are NOT allowed to have phones out during school for any reason. Any phones that are taken out or are being used during the day will be confiscated and put down in the office. The phone can only be picked up by a parent/guardian from the office at the end of the day. If you are sending in a phone with your student, it must be either turned in to the teacher or left in the student's locker in his/her backpack. Please keep in mind that lockers do not lock and we are not held accountable for any property that is lost or stolen. We highly recommend that phones be turned in to the teacher before school starts and that he/she gets it back at the end of the day.

### **Smoking on School Grounds**

Please keep in mind that it is against District Policy for anyone to smoke on school grounds. This includes smoking in your car in the parking lot. Please do not smoke anywhere on our school grounds or we may have to ask you to leave. Let's make good choices to support our school and our students and families.

### **Birthday Treats**

We are no longer allowing birthday treats to be brought into classes. This is stated clearly in our student handbook (Treats, Snacks & Lunches provided by parents for entire classrooms will not be allowed during the 2023/2024 school year). This helps everyone to be safe given increasing concerns over food allergies and other medical issues that all parents/families may not be aware of. You can reach out to your child's teacher about alternative options that don't involve food.





# Adventure Time with Sing. Say. Point. Play.

Join us at the 3rd Annual **Free Drive-Thru Event**  
for young children and their grownups!

Fun activities  
to build  
literacy skills

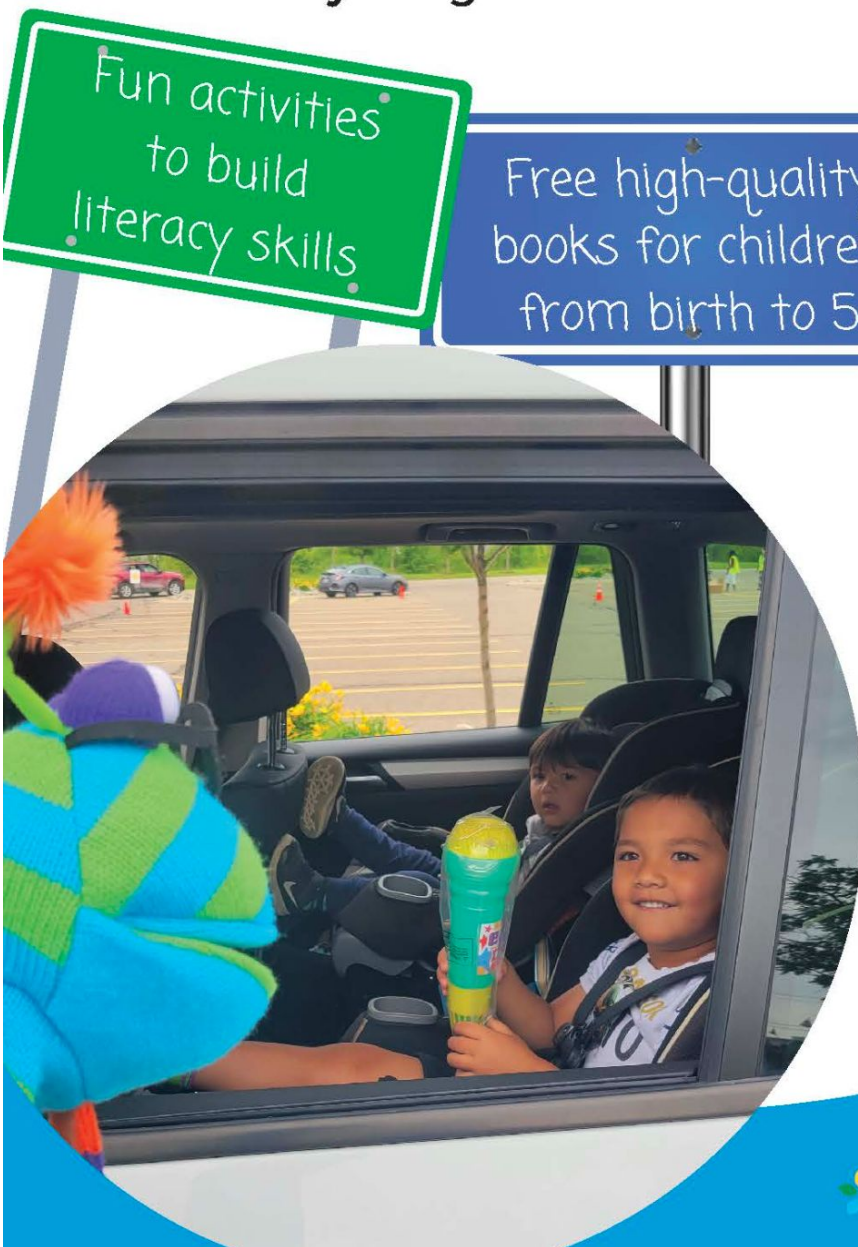
Free high-quality  
books for children  
from birth to 5

Find out about awesome  
fall programs & events in  
the community

Saturday  
September 16th  
from 10 to 12 pm

Hazel Park Junior High School  
22770 Highland Ave #1803  
Hazel Park, MI 48030

Look  
who's  
joining us!







JOIN THE

# Hazel Park Dance Teams!

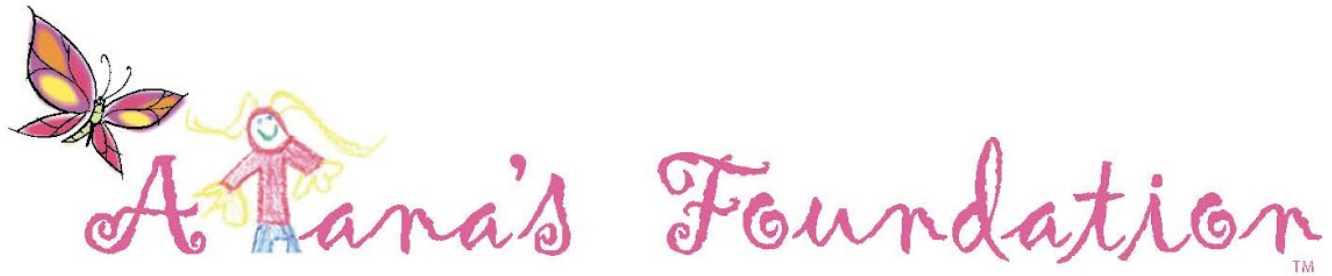
**September 18th and 20th  
4:30pm-6pm  
Webb Elementary**

**NO  
EXPERIENCE  
NEEDED!**

WEAR COMFORTABLE CLOTHES.  
BRING WATER BOTTLE.  
HAIR UP AND OUT OF FACE.  
EVERYONE WELCOME!

*Looking for dancers in grades 1st - 3rd  
to join HPDT's competitive team.*

Questions? Contact Coach Tiffany at 248-761-1291



Presents

# Flu Vaccination Clinic



## WHEN:

Tuesday, September 26  
3:00 PM -5:00 PM

## WHERE:

Hazel Park High School  
**23400 Hughes Ave.**  
Hazel Park, MI 48336

ALL attendees MUST complete an online consent \*

COMPLETE CONSENT TO PRE-REGISTER\*.

GO TO:

<https://alanas.vna.org>

ENTER:

Clinic ID: **1827** | Passcode: **ALANAS2023**

*SEARCH by clinic date*



Children 17 and under **must** have consent  
form completed by parent/guardian

- Cost:
  - o Insured - bring a copy of your insurance card.
  - o Uninsured/Underinsured - Alana's Foundation subsidizes
- Quadrivalent injectable flu vaccine is available for ages 2+
- \*Pre-registration ensures adequate vaccine supply. Participants serviced first come, first served.
- Face masks are optional for vaccine recipients.

Flu vaccinations administered by  
Michigan Community  
Visiting Nurse Association



Questions:

[info@alanafoundation.org](mailto:info@alanafoundation.org) ~ [www.AlanasFoundation.org](http://www.AlanasFoundation.org)



# Hazel Park District Library

**FREE  
PROGRAM**

## **FAMILY FUN NIGHT**

## **Trick or Treat at**

## **The Library**

## **TUESDAY, Oct 24**

## **6:30-7:30pm**

## **(Ages 0-12 & siblings)**

## **Please Register!**

Wear your costume and join us for Trick or Treating stations inside the library. Afterward, we'll paint mini pumpkins, play games, and do crafts.



123 E Nine Mile  
Hazel Park, MI 48030  
<http://hazel-park.lib.mi.us/>  
248-546-4095

# Hazel Park District Library

## TRICK OR TREAT @ CITY HALL

**FRIDAY, OCT 27 11:00AM**  
**(AGES 0-5 & SIBLINGS)**

**FREE  
PROGRAM**

### **TINY TALES STORYTIME @ HAZEL PARK DISTRICT LIBRARY 10:30AM**

Join us for trick or treating at City Hall.  
Meet in costume at 11am and we will  
parade at City Hall after Storytime. Take  
home a mini pumpkin to paint or carve.



123 E Nine Mile  
Hazel Park, MI 48030  
<http://hazel-park.lib.mi.us/>  
248-546-4095







## Hazel Park district Library

# WILD WINGS WILD BIRD REHABILITATION WITH MARGE SAPP

TUESDAY, NOVEMBER 14  
6:30-7:30PM

**FREE  
PROGRAM**

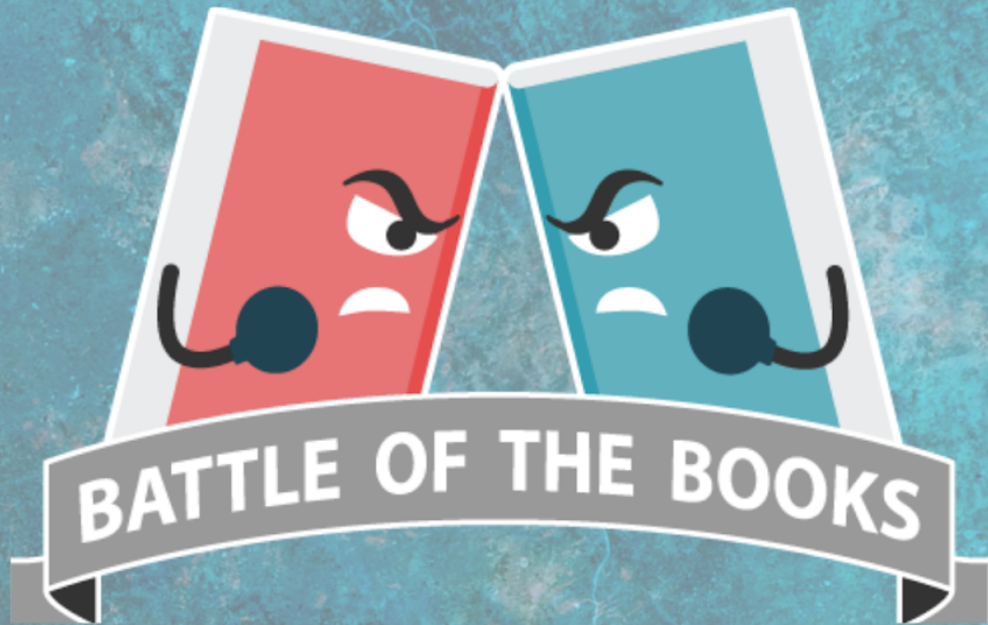
**Marge will bring some of her birds for you to see and tell us about them. Wild Wings is a non-profit, locally owned and operated songbird rehab center. It is the only songbird rehabilitation center in Oakland County with over 600 birds a year. It is run by donations and volunteers.**



123 E Nine Mile  
Hazel Park, MI 48030  
<http://hazel-park.lib.mi.us/>  
248-546-4095



# Hazel Park District Library



Battle of the Books is a competitive, knowledge-based series of activities to encourage the joy of reading while working as a team.

***Come to the library to sign up and create a team for grades***

***3-5, 6-8 & 9-12***

***Win prizes, eat pizza and have a great time***

If you have questions, contact Amy or Randy at 248-546-4095 or [abeem@hazel-park.lib.mi.us](mailto:abeem@hazel-park.lib.mi.us)

# HAZEL PARK DISTRICT LIBRARY

# Harry Potter

**Free!**

## PARTY

**SATURDAY, NOVEMBER 4  
1-3 PM**

**\*REGISTRATION IS HIGHLY RECOMMENDED\***

**COME DRESSED AS YOUR FAVORITE CHARACTER OR HOUSE!**

## FEATURES:

- Bertie Bott's jelly bean tasting
- Butter Beer & Chocolate Frogs
- Games & Crafts
- Potions and Wand lessons
- Sorting Hat
- Photo Booth

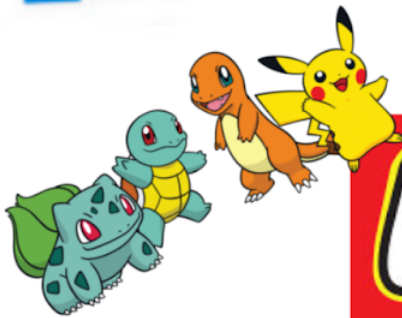


123 E. 9 Mile Rd Hazel Park, MI 48030 248-546-4095



# Hazel Park District Library

**POKÉMON**  
&



**LEGO CLUB**



**SEPTEMBER 5, OCTOBER 3 ,  
NOVEMBER 7, DECEMBER 5**

**Legos, craft & games, oh my! We will build with Legos and display our masterpieces in the Library. Bring your Pokemon cards. You can battle with friends, play the card game and do crafts.**



# HAZEL PARK DISTRICT LIBRARY



***GOTTA CATCH 'EM ALL!***

**Thursdays at 6:30 PM**

**August 24: Red Oaks Nature Center**

(30300 Hales St, Madison Heights, MI 48071)

**September 7: Harding Park**

(989 Mapledale Ferndale, MI 48220)

**September 21: Scout Park**

(901 E Otis Ave Hazel Park MI 48030)

**October 5: Rosie's Park:**

(1111 E Farnum Ave, Madison Heights, MI 48071)

**October 19: Martin Rd Park:**

(1615 E Lewiston Ave, Ferndale, MI )

**November 9: Harding Park**

(989 Mapledale Ferndale, MI 48220)

**Join us to catch Pokemon and battle.  
Everyone will get 1 FREE Pokemon card.**



The Hazel Park District Library Summer Reading Picnic has been rescheduled.

*Here's the scoop!*



SUMMER READING PARTICIPANTS ARE INVITED TO AN

## ICE CREAM SOCIAL

PLEASE CALL TO REGISTER!

SEPTEMBER  
28TH

HAZEL PARK  
DISTRICT LIBRARY  
248-546-4095

6:00 PM