



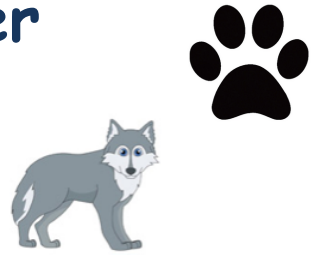
Webb Happenings Newsletter

Corri Nastasi, Principal

corri.nastasi@hazelparkschools.org

248-658-5900

September 11, 2023



Important Dates

9/11/23 - Webb PTA Meeting

9/12/23 - Bagel Day

9/25/23 - No School for Students - Professional Development Day for staff

9/28/23 - $\frac{1}{2}$ day of school - students dismissed at 11:20am - Records Day for staff

From the Principal

Dear Webb Families,

I am amazed at the wonderful turnout we had for our "Meet the Teacher Night" on Thursday. It was so great to see so many of our families represented at this event. This event provided so many opportunities to meet the teacher, other staff members and to see and learn about your child's class this year. Thanks to those that were able to attend. For those who were not able to attend, a link was sent out with some important information that was shared during "Meet the Teacher Night". We hope to see continued family participation throughout the year as we work together to make this a successful school year for all of our students.

Sincerely,

Corri Nastasi

Principal, Webb Elementary

Bagels

Our first bagel day will be Tuesday, September 12th. Students and staff can buy bagels for \$1 each. The flavors offered are cinnamon raisin, plain, salt & onion.

PTA

We are in need of individuals who are interested in supporting our PTA this year. Every little bit helps. Everyone is welcome to join us. We will have our first meeting at Webb on Monday, September 11th at 3:30PM in the Webb Media Center.

Early Dismissal

Please remember our district policy states we cannot dismiss students after 2:30PM. It is very disruptive to the learning that is happening in the classrooms and the end of the day routines. If you have a doctor appointment and need your child to leave early, please come before 2:30PM.

Playground

Please remember that students CANNOT play on the playground after school unless an adult accompanies them. The adult has to be physically on the playground with the child. They cannot be sitting in the car in the parking lot. After dismissal, the adult who picks them up are responsible for behaviors by any students in their care.

Late Pick-Up Procedures

Here is another excerpt from the HP Student Handbook regarding our late pick up procedures:

Late Pick-Up Procedures

As a reminder, dismissal times for our elementary buildings are 3:10 pm or 11:20 am on half days unless your child regularly attends latchkey. While life's complex circumstances may occasionally get in the way of a timely pick-up, it is important that you contact your school office and let them know you are running late.

*Any student who is **not picked up by 3:30 pm** will be placed in the Late Pick-Up Room. The Late Pick Up Room will be **staffed from 3:30 pm - 4:30 pm**. Starting at **3:30 pm**, a **\$10.00 fee** will be charged for **every 15 minutes** your child is in the late pick-up room. If you have more than one child, the fee will be applied to each child. We understand that a situation may occur that will impact your ability to pick your child or children up on time. Therefore, we have built some flexibility into the fees that will be charged. The fees will be charged as outlined in the table below.*

<i>First Late Pick-Up</i>	<i>No Fee</i>
<i>Second Late Pick-Up</i>	<i>Fee Applied (unless extreme emergency as approved by Principal)</i>
<i>Third Late Pick-Up</i>	<i>Fee Applied (up to 4:30 pm - *see note below) and follow-up phone call from the building principal</i>
<i>Four or More Late Pick-Ups</i>	<i>Fee Applied (up to 4:30 pm - *see note below) and meeting with the building principal</i>

**** If a student is not picked up by 4:30 the Hazel Park or Ferndale Police will be contacted.***

If you are unable to pick up your child on time, it is imperative that you have an alternative plan for daily dismissal, as the office staff is not equipped to provide after school care. If you are interested in our after-school latchkey program, please check our school website for enrollment information.

Student Dismissal

Just a reminder to our parents (especially for our younger classes) to give teachers a bit of space as they dismiss students at the end of the day. It is critical that they are able to focus and make sure students are being picked up by the right adult. Please do not approach teachers with questions/concerns until most students have left and the teacher is able to divide her attention safely.

Student Arrival

I want to remind you that I would like for everyone to stay in their cars until 7:40AM unless your child goes to latchkey. We do NOT have any supervision in place before this time and if we have a crowd around the front door it is very hard to determine which children are or are not with which adults. Please remain in cars or across the street until 7:40AM. Walkers should stay at the edge of the property until 7:40AM as well. Thank you for your cooperation with this.

Riding Bikes to School

Please see this excerpt from our Student Handbook regarding riding bikes to school:

Bike Rules & Regulations - Elementary

Elementary students will be allowed to ride bikes to school; While we encourage our bike riders to be in grades 4 & 5, it is up to the discretion of parents whether or not their child will be allowed to ride a bike.

- *Scooters will not be permitted.*
- *Bikes must be locked to the bike rack; The school is not liable for any stolen bikes.*
- *Student bike riders must wear helmets.*
- *Students must walk their bikes, once on school grounds.*
- *Noncompliance with rules on school property, may mean the suspension of bike riding privileges.*
- *The district will offer a bike safety class/ride in the spring.*

If students do not bring a lock to school, the bike will be brought inside the building and one warning will be given. After that, parents will need to pick up the bike.

If a student does not wear a helmet to school, the student will receive one warning. After that, parents will need to pick up the bike.

If a student has three violations regarding locks or helmets, the student will lose the privilege and can no longer ride a bike to school.

Cell Phones

We want to make you aware that students are NOT allowed to have phones out during school for any reason. Any phones that are taken out or are being used during the day will be confiscated and put down in the office. The phone can only be picked up by a parent/guardian from the office at the end of the day. If you are sending in a phone with your student, it must be either turned in to the teacher or left in the student's locker in his/her backpack. Please keep in mind that lockers do not lock and we are not held accountable for any property that is lost or stolen. We highly recommend that phones be turned in to the teacher before school starts and that he/she gets it back at the end of the day.



JOIN THE

Hazel Park Dance Teams!

September 18th and 20th

4:30pm-6pm

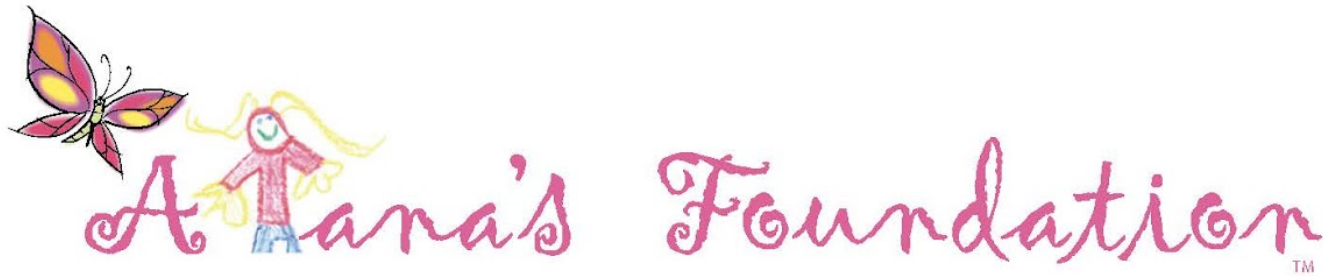
Webb Elementary

**NO
EXPERIENCE
NEEDED!**

WEAR COMFORTABLE CLOTHES.
BRING WATER BOTTLE.
HAIR UP AND OUT OF FACE.
EVERYONE WELCOME!

*Looking for dancers in grades 1st - 3rd
to join HPDT's competitive team.*

Questions? Contact Coach Tiffany at 248-761-1291



Presents

Flu Vaccination Clinic



WHEN:

Tuesday, September 26
3:00 PM -5:00 PM

WHERE:

Hazel Park High School
23400 Hughes Ave.
Hazel Park, MI 48336

ALL attendees MUST complete an online consent *

COMPLETE CONSENT TO PRE-REGISTER*.

GO TO:

<https://alanas.vna.org>

ENTER:

Clinic ID: **1827** | Passcode: **ALANAS2023**

SEARCH by clinic date



Children 17 and under **must** have consent
form completed by parent/guardian

- Cost:
 - o Insured - bring a copy of your insurance card.
 - o Uninsured/Underinsured - Alana's Foundation subsidizes
- Quadrivalent injectable flu vaccine is available for ages 2+
- *Pre-registration ensures adequate vaccine supply. Participants serviced first come, first served.
- Face masks are optional for vaccine recipients.

Flu vaccinations administered by
Michigan Community
Visiting Nurse Association



Questions:

info@alanafoundation.org ~ www.AlanasFoundation.org

Hazel Park District Library

**FREE
PROGRAM**

FAMILY FUN NIGHT
Trick or Treat
at
The Library
TUESDAY, Oct 24
6:30-7:30pm
(Ages 0-12 & siblings)
Please Register!



Wear your costume and join us for Trick or Treating stations inside the library. Afterward, we'll paint mini pumpkins, play games, and do crafts.



123 E Nine Mile
Hazel Park, MI 48030
<http://hazel-park.lib.mi.us/>
248-546-4095

Hazel Park District Library

TRICK OR TREAT @ CITY HALL

FRIDAY, OCT 27 11:00AM

(AGES 0-5 & SIBLINGS)

FREE
PROGRAM

TINY TALES STORYTIME @ HAZEL PARK DISTRICT LIBRARY 10:30AM

Join us for trick or treating at City Hall.
Meet in costume at 11am and we will
parade at City Hall after Storytime. Take
home a mini pumpkin to paint or carve.



123 E Nine Mile
Hazel Park, MI 48030
<http://hazel-park.lib.mi.us/>
248-546-4095





Hazel Park district Library

WILD WINGS WILD BIRD REHABILITATION WITH MARGE SAPP

TUESDAY, NOVEMBER 14
6:30-7:30PM

**FREE
PROGRAM**

Marge will bring some of her birds for you to see and tell us about them. Wild Wings is a non-profit, locally owned and operated songbird rehab center. It is the only songbird rehabilitation center in Oakland County with over 600 birds a year. It is run by donations and volunteers.



123 E Nine Mile
Hazel Park, MI 48030
<http://hazel-park.lib.mi.us/>
248-546-4095

Hazel Park District Library

Baby Story Time



Wednesdays, 1:00 pm

(Older siblings are welcome)

No storytime August 23

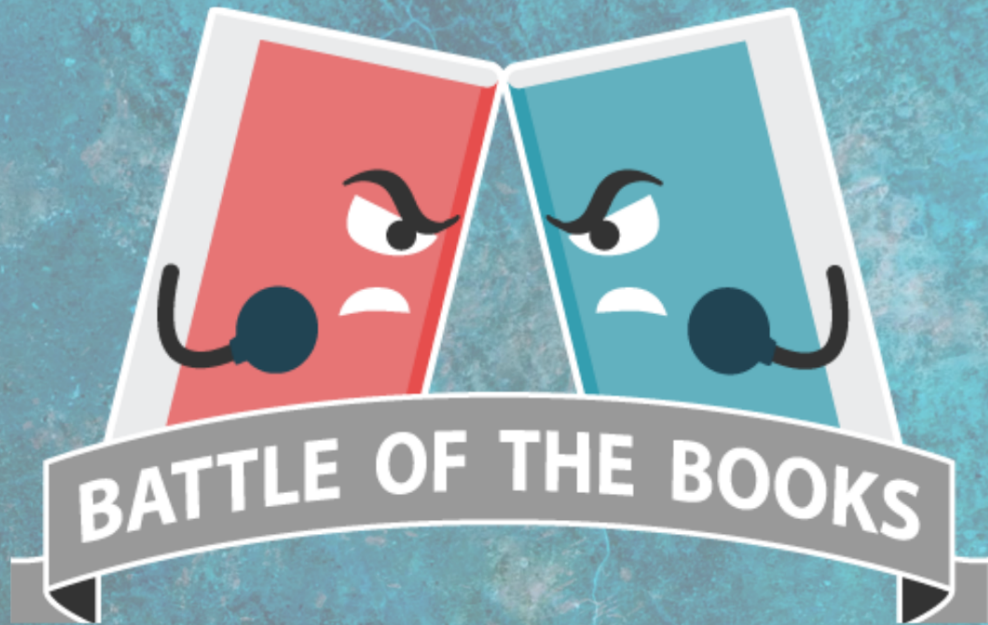
Baby Story Time supports early literacy and language skills by encouraging singing, playing, talking, and shared reading.

Join us for fun stories, finger plays, and snuggling in a welcoming environment! This FREE program is geared toward babies, but older siblings are welcome.



123 E Nine Mile
Hazel Park, MI 48030
<http://hazel-park.lib.mi.us/>
248-546-4095

Hazel Park District Library



Battle of the Books is a competitive, knowledge-based series of activities to encourage the joy of reading while working as a team.

Come to the library to sign up and create a team for grades

3-5, 6-8 & 9-12

Win prizes, eat pizza and have a great time

If you have questions, contact Amy or Randy at 248-546-4095 or abeem@hazel-park.lib.mi.us

HAZEL PARK DISTRICT LIBRARY

Harry Potter

Free!

PARTY

**SATURDAY, NOVEMBER 4
1-3 PM**

REGISTRATION IS HIGHLY RECOMMENDED

COME DRESSED AS YOUR FAVORITE CHARACTER OR HOUSE!

FEATURES:

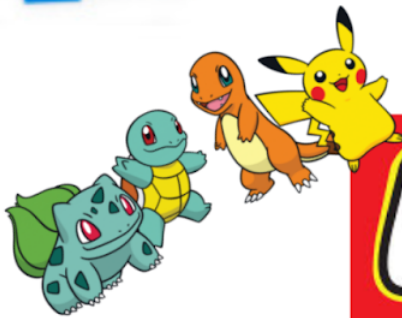
- Bertie Bott's jelly bean tasting
- Butter Beer & Chocolate Frogs
- Games & Crafts
- Potions and Wand lessons
- Sorting Hat
- Photo Booth



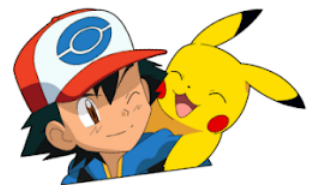
123 E. 9 Mile Rd Hazel Park, MI 48030 248-546-4095

Hazel Park District Library

POKÉMON
&



LEGO CLUB



**SEPTEMBER 5, OCTOBER 3 ,
NOVEMBER 7, DECEMBER 5**

Legos, craft & games, oh my! We will build with Legos and display our masterpieces in the Library. Bring your Pokemon cards. You can battle with friends, play the card game and do crafts.



HAZEL PARK DISTRICT LIBRARY



GOTTA CATCH 'EM ALL!

Thursdays at 6:30 PM

August 24: Red Oaks Nature Center

(30300 Hales St, Madison Heights, MI 48071)

September 7: Harding Park

(989 Mapledale Ferndale, MI 48220)

September 21: Scout Park

(901 E Otis Ave Hazel Park MI 48030)

October 5: Rosie's Park:

(1111 E Farnum Ave, Madison Heights, MI 48071)

October 19: Martin Rd Park:

(1615 E Lewiston Ave, Ferndale, MI)

November 9: Harding Park

(989 Mapledale Ferndale, MI 48220)

**Join us to catch Pokemon and battle.
Everyone will get 1 FREE Pokemon card.**

The Hazel Park District Library Summer Reading Picnic has been rescheduled.

Here's the scoop!



SUMMER READING PARTICIPANTS ARE INVITED TO AN

ICE CREAM SOCIAL

PLEASE CALL TO REGISTER!

SEPTEMBER
28TH

HAZEL PARK
DISTRICT LIBRARY
248-546-4095

6:00 PM

Hazel Park Library

Tiny Tales Storytime

Free!

Fridays 10:30am

Ages 0-5 (Older siblings are welcome)

We read stories, do fun fingerplays, sing songs, play, color, and letter recognition games. Sometimes we will be doing a craft that you can pick up from the library. Join us for a fun time and develop literacy, language, and social skills as well as positive associations with reading and the library.

(No storytime Sept 1, Nov 10 & 24, Dec . 22 & 29)



123 E Nine Mile
Hazel Park, MI 48030
<http://hazel-park.lib.mi.us/>
248-546-4095