



April 4th, 2025

Dear Jardon/Webb Community,

We had a great week back after Spring Break. Students were able to get right back into the swing of things with their job sites as well as regular daily routines. We are being teased with a few nice Spring days here and there. Hopefully we have more to come! The students really enjoy being able to participate in physical fitness activities outside as part of their home living and self care learning.

We honored our March student of the month nominees this week. Each classroom selects one student. They are pictured below. Far Art Therapy is featured below as well.

Community based instruction is moving from Monday to Tuesday for the next two weeks to accommodate district bussing needs. This schedule change is reflected below under CBI.

Please join us on social media! Find us on Facebook by searching for Jardon Vocational School. You will see regular updates posted there about what's going on at Jardon! Please feel free to contact me at heidi.kunz@myhpsd.org or 248-658-5953, if you have any questions or concerns.

Thank you,

Heidi Kunz

APRIL

APRIL 11TH- HALF DAY

11:00AM DISMISSAL

RECORDS DAY

APRIL 17TH- HALF DAY

11:00 AM DISMISSAL

APRIL 18TH- NO SCHOOL

APRIL 24TH- DISNEY DANCE PARTY

FUN NIGHT 6-7:45 PM

ADMISSION \$5



BAGEL DAYS

WEDNESDAY, APRIL 16TH

BAGEL – \$1.00

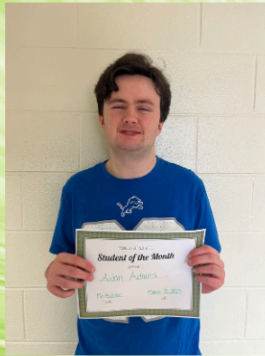
BAGEL WITH CREAM CHEESE – \$1.50



March

Student Of The Month

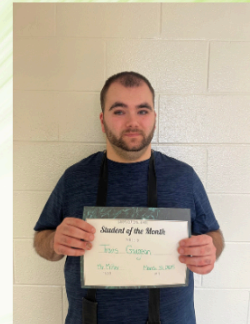
**Aidan
Adams**



**Finnegan
Tucker**



**Travis
Gougeon**



**Bessie
Wallace**



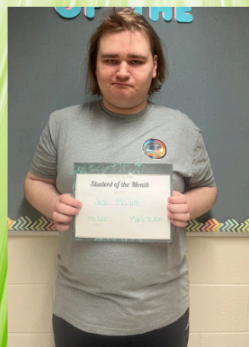
**Akaysha
Arther-Chacon**



**Zackary
Vollmer**



**Jacob
McClure**



**Nico
Rivera-Letcher**





ASD
EAR THERAPY
ART CLASS



JARDON BOCCE BALL

2025 Spring Season



Jardon will have 1 ½ hour practices right after school
starting Tuesday, April 8th until May 27th.

In order to stay for practice Parents/Guardians will need to agree to
PICK UP ATHLETE AT 4:00 pm
at the front of Jardon.

On nice weather Tuesdays we will be playing outside on Jardon's front lawn-
Please come early and watch your athlete.

_____ cut here _____

Send bottom portion back to school

JARDON BOCCE BALL

2025 Spring Season

My son/daughter/ward, _____, will be able to
athlete's name

stay after school to participate in bocce ball on scheduled days:

A ride will arrive by 4:00 pm to pick my child/ward.

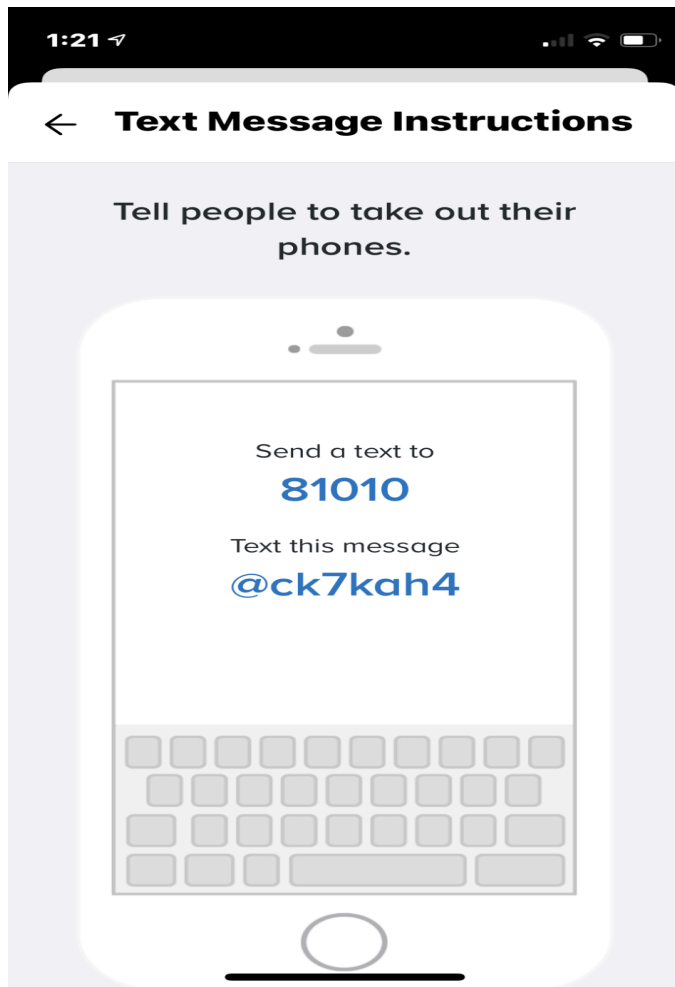
Parent/Guardian/Group home manager signature

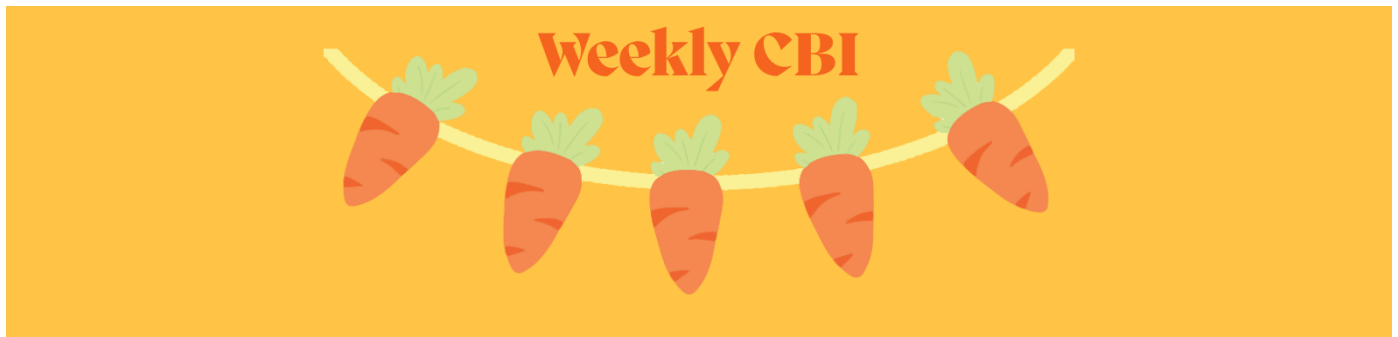
date

JARDON BOCCE BALL

2025 Spring Season

We will be using the app 'Remind' to inform athletes and families/caregivers of changes to schedule (i.e.: practice canceled, times change for games, etc.) or other important information.... People can also contact us this way to inform the coaches of absences or such. To join Remind.....





Jardon MoCI Community-Based Instruction for the Upcoming Week:

Tuesday- 4/08- P.M. - Meijer

Thursday- 4/10- P.M.- Red Oaks Nature Center

Jardon ASD Community-Based Instruction for the Upcoming Week:

Tuesday - 4/08- P.M. - Walmart

Thursday- 4/10- P.M.- Whole Foods

(All CBI locations are subject to change due to weather etc.)



SCHOOL STORE ITEM LIST

BEVERAGES

<u>ITEM</u>	<u>COST</u>
AQUAFINA WATER	\$1.50
COKE CANS	\$1.00
DIET COKE CANS	\$1.00
GATORADE VARIETY PACK	\$1.00
WELCH'S JUICE VARIETY PACK	\$1.00
PROPEL VARIETY PACK	\$1.00
FAYGO VARIETY PACK	\$1.00
COFFEE	\$1.00
(Starbucks Sumatra, Victor Allen's Sweet and Salty Caramel, Tim Hortons Dk Roast Maple Pecan, Cinnamon Roasted Almond, Butter Toffee)	
Hot Chocolate	\$1.00
Flavored Creamers	\$.25 (extra creamer)
FRENCH VANILLA CREAMERS	
CARAMEL MACCHIATO CREAMER	
HALF AND HALF	

CANDY

<u>ITEM</u>	<u>COST</u>
SWEDISH FISH	\$1.00
SKITTLES	\$1.00
KIT KAT BARS	\$1.00
HERSHEY CHOC.BARS	\$1.00

CHEESE

<u>ITEM</u>	<u>COST</u>
CHEESE STICKS	\$1.50
SNACKS	
CHEEZ-ITS	\$1.50
ASSORTED chips	\$1.50
(Fritos, Ruffles, Sour Cream, Cheddar, Queso	
Lays chips: Sour Cream, Cheddar Sour Cream	
Doritos, Sunchips, Cheetos)	
FAMOUS AMOS CHOC CHIP COOKIES	\$.50
OREO COOKIES	\$1.00
Pretzels	\$.50
StroopWafel	
(Dutch waffle, Caramel filled cookie	\$.75
Belvita snack packs	
(Cinn, Brown Sugar, Blueberry, Chocolate)	\$.75
Crackers- Club & Ritz	\$.75
Pure Protein Bar	\$1.50
Nature Valley Protein Bar	\$1.00
Pickles	\$.50

CANDY

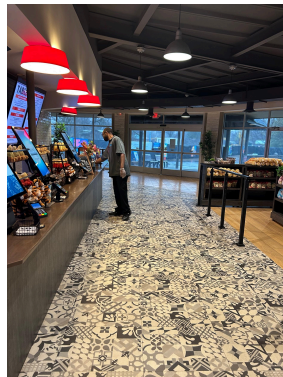
<u>ITEM</u>	<u>COST</u>
HERSHEY COOKIES & CREME	\$1.00
TWIX	\$1.00
M & M CHOCOLATE	\$1.00
FRUIT BY THE FOOT	\$1.00

Just From Jessi

Transition Coordinator

Welcome Back from Spring Break!

I am so proud to see that our workers didn't miss a beat and were able to jump right back into work this week! Check out some of our student workers in action:



National Paraprofessional Day was Wednesday, April 2nd! Thank you to our AMAZING paras and job coaches! We would not be able to have the variety of experiences we do without their hard work and dedication. Thank you for ALL that you do! It does not go unnoticed.

Resource Features:

Planning for a Good Life: Join us to learn how you can use Charting the LifeCourse tools to develop a vision for a good life and make goals for the future.

Led by: Sheldon Schwitek

Co-Founder and Consultant for In the Company of Others

Dates:

May 14, 2025

June 3, 2025

June 18, 2025

Please register in advance.

This interactive, hands-on workshop will:

- Introduce the Charting the LifeCourse as a foundation for planning for a good life.

Planning for a Good Life

Join us to learn how you can use Charting the LifeCourse tools to develop a vision for a good life and make goals for the future.

Led by: Sheldon Schwitek
Co-Founder and Consultant for In the Company of Others

Dates:
May 14, 2025
June 3, 2025
June 18, 2025

Please register in advance.
See the reverse side for more details.

Who should attend?

- Individuals with intellectual and/or developmental disabilities
- Family members
- Caregivers
- Professionals supporting families and individuals with intellectual and/or developmental disabilities.

Hosted by:

MDCC

This interactive, hands-on workshop will:

- Introduce the Charting the LifeCourse as a foundation for planning for a good life.
- Highlight the significant role families play in their children's lives across the lifespan.
- Inspire person centered journeys by providing examples and strategies
- Create an opportunity for reflection and brainstorming for how this framework can be used for person-centered and IEP planning.

- Highlight the significant role families play in their children's lives across the lifespan.
- Inspire person centered journeys by providing examples and strategies
- Create an opportunity for reflection and brainstorming for how this framework can be used for person-centered and IEP planning

Planning for a Good Life

May 14, 2025
Time: 9:30 am - 3:30 pm
Location: DoubleTree by Hilton
 4747 28th St SE
 Grand Rapids, MI 49512
Register here:
surveymonkeys.com/f/N2QYXP9

June 3, 2025
Time: 9:30 am - 3:30 pm
Location: Oakland Schools Conference Center
 2111 Pontiac Lake Rd
 Waterford, MI 48328
Register here:
surveymonkeys.com/f/YKKV85TC

June 18, 2025
Time: 9:30 am - 3:30 pm
Location: Winding Brook Conference Center
 8240 S. Genuine Rd
 Shepherd, MI 48883
Register here:
surveymonkeys.com/f/H9FKW2W

Lunch will be provided at each session.

Hosted by:


Bloomfield Scamp: SCAMP is a 4-week summer program that seeks to provide an exciting and therapeutic summer program for individuals with disabilities ages 3-26 in the Metro Detroit area. Bloomfield SCAMP was founded in 1967 and was the first summer camp in our area to provide a summer program for individuals with disabilities. Campers enjoy a variety of structured activities that focus on social skills improvement, language enrichment, and prevocational skills are focused on at SCAMP. They also enjoy art and music therapy and physical education. Participants in this program will swim at Walnut Lake which is located behind Lone Pine Elementary School in West Bloomfield.

[Website LINK HERE](#)



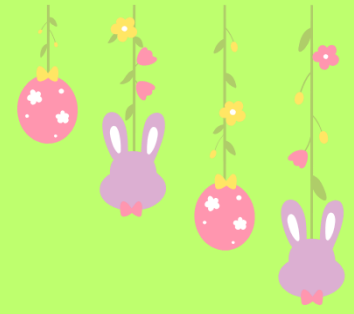
Bloomfield Hills SCAMP
 A Special Camp for Summer Fun!
June 23-July 24
 Mondays through Thursdays
 9:00 am - 2:45 pm
 At South Hills Middle School
 Bloomfield Hills, MI

Registration Begins March 1st

ACTIVITIES

Jessi Haines
 Jardon Transition Coordinator
 Hazel Park School District
 (248) 658 - 5958
jessica.haines@myhpsd.org

News From Nurse Stephanie



Medication Intake Forms

New this year, many of our families have already received Medication Intake forms when dropping off/picking up medications for their students. What is this form, and why do we need it?

When a parent/guardian sends in medication for a student, we need to:

- Verify which medication, and how much of it, is brought to school;
- Be sure the student has a Medication Authorization form, filled out and signed by the health care provider AND parent/guardian;
- Check that each medication is not expired, and is in its' original container (with the pharmacy label for prescription medicines) that matches the provider's order; and
- Confirm it is stored properly if/when it is not being carried by the student.

When picking up or returning medication, we also fill out this form as a record of which medication, and how much, is being returned.

Both the DSP/School Nurse and parent/guardian need to sign these forms, one per medication. I will make a copy of each form to send home, for parents to refer back to as well.

I hope this is helpful - if you have any questions, feel free to reach out!

Best,
Nurse Stephanie
248-658-5956
stephanie.fowlereagan@myhpsd.org

April 2025

Jardon Vocational School
Lunch

MONDAY	TUESDAY	WEDNESDAY	THURSDAY	FRIDAY
	1 Lunch • Sweet & Sour Chicken • Cheese Stuffed Breadsticks • Marinara Sauce • EZ Jammer Wowbutter & Jelly Sandwich	2 Lunch • Mini Chicken Corn Dogs • Breaded Chicken Drumstick • Muffin, Goldfish & Yogurt Fun Lunch	3 Lunch • Boneless Chicken Wings • Toasty Cheese Sandwich • Popcorn Chicken Salad • Flatbread	4 Lunch • Cheesy Italian Pull Apart • Classic Pepperoni Pizza • EZ Jammer Wowbutter & Jelly Sandwich
7 Lunch • Macaroni & Cheese • Fiestada Pizza • Turkey Ham & Cheese Sandwich	8 Lunch • Jumbo Crispy Chicken Tenders • Southwest Queso Pull Apart • Salsa • EZ Jammer Wowbutter & Jelly Sandwich	9 Lunch • BBQ Oven Roasted Chicken Drumstick • Bacon Cheeseburger • Muffin, Goldfish & Yogurt Fun Lunch	10 Lunch • Personal Cheese Pizza • Hot Turkey Ham & Cheese Bagel • Popcorn Chicken Salad • Flatbread	11
14 Lunch • Mini Cheese Ravioli with Marinara Sauce • Chicken Tenders • Whole Grain Dinner Roll • Turkey Ham & Cheese Sandwich	15 Lunch • Beef Nachos • Cheese Stuffed Breadsticks • Marinara Sauce • EZ Jammer Wowbutter & Jelly Sandwich	16 Lunch • Mini Chicken Corn Dogs • Breaded Chicken Drumstick • Whole Grain Dinner Roll • Muffin, Goldfish & Yogurt Fun Lunch	17	18
21 Lunch • Macaroni & Cheese • Fiestada Pizza • Turkey Ham & Cheese Sandwich	22 Lunch • Beef Taco Meat • Southwest Queso Pull Apart • EZ Jammer Wowbutter & Jelly Sandwich	23 Lunch • BBQ Oven Roasted Chicken Drumstick • Bacon Cheeseburger • Muffin, Goldfish & Yogurt Fun Lunch	24 Lunch • Chicken & Cheese Quesadilla • Turkey Ham & Cheese Bagel Melt • Popcorn Chicken Salad • Flatbread	25 Lunch • Jumbo Crispy Chicken Tenders • Classic Pepperoni Pizza • EZ Jammer Wowbutter & Jelly Sandwich
28 Lunch • Cheese Lasagna Rollup • Chicken Tenders • Turkey Ham & Cheese Sandwich	29 Lunch • Sweet & Sour Chicken • Cheese Stuffed Breadsticks • Marinara Sauce • EZ Jammer Wowbutter & Jelly Sandwich	30 Lunch • Mini Chicken Corn Dogs • Breaded Chicken Drumstick • Muffin, Goldfish & Yogurt Fun Lunch		

If you have a food allergy, please notify us. Ask your cafeteria manager if changes were made to today's menu so we can help keep you safe!

Menus Subject to Change We try our best to serve our menus as posted; however, sometimes last minute changes occur. Please check with the cafe manager prior to the meal if you have any concerns.

This institution is an equal opportunity provider. Layout & Design © Nutrislice, Inc. Printed on 4/1/2025 at 10:55 am .



**HAZEL PARK
SCHOOLS**



Hazel Park Schools Administration Building

1620 E. Elza Hazel Park



*Distribution Dates Are Fridays (**unless in bold**) beginning at 9 am unless noted*

October 18, 2024	January 17, 2025	April 18, 2025	July 18, 2025
November 19, 2024	February 14, 2025	May 16, 2025	Aug. 15, 2025
December 13, 2024	March 14, 2025	June 13, 2025	Sept. 12, 2025

The food goes very quickly, so please come early to get in line. We cannot distribute items until the milk truck arrives and the setup is done.

Hazel Park Schools has partnered with Gleaners Community Food Bank to bring the School Mobile Food Pantry to our students and their families. ***Food distributions deliver 20-30 lbs of food, including milk, lean meats, fresh fruits, vegetables, and dry goods every month.***

Please line up in your car in the parking lot, going down Elza in front of the school. **Please do not block any driveways and be sure to line up along the curb to avoid blocking the road.** We appreciate your cooperation in this matter out of respect and safety for our neighbors.

Please have your Gleaners card ready when you arrive. If you are new to Gleaners and do not have a card, you will be asked to fill out a form with your information as well as information for those in your household.

Gleaner's information will be sent by email and voice messages as reminders when you sign up for communications through your children's school.

Sign up for communications may be done through your Parent Portal on PowerSchool or the school district website, www.hazelparkschools.org/parents/resources--quick-links, then click on Alert Sign up.

Contact your Community Representative to help your family with resources for things such as bill pay, eyeglasses, local food pantries, and other resources. We want to make sure that all the needs of our students are addressed to the best of our abilities.

Gleaners Mobile School Pantry Site Coordinators:

***Jamie Buczko, Administrative Assistant to the Superintendent
(248) 658-5220 jamie.buczko@myhpsd.org***

***Nancy Anderson - Human Resource Specialist
(248)658-5201 nancy.anderson@myhpsd.org***

This institution is an equal opportunity provider.

