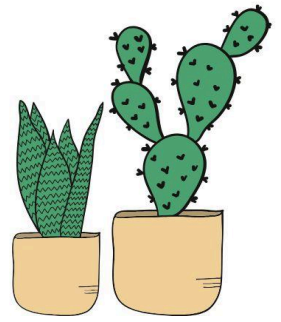




JARDON VOCATIONAL SCHOOL  
PARENT NEWSLETTER  
*From The Principal*



September 19th, 2025

Dear Jardon/Webb Community,

It's been a great week here at Jardon! Students have settled into their routines and are working hard each day. This week students who participate in Work-Based Learning were able to begin their first work rotation. It is so exciting to see students excited about their new opportunities.

Picture day is coming soon! All students will be photographed for their student identification cards regardless of whether you are purchasing a package or not. Jardon picture day is September 29, and Webb SXI picture day is October 1. Picture ordering information went home this week.

Please join us on social media! Find us on Facebook by searching for Jardon Vocational School. You will see regular updates posted there about what's going on at Jardon! Please feel free to contact me at [heidi.kunz@myhpsd.org](mailto:heidi.kunz@myhpsd.org) or 248-658-5953, if you have any questions or concerns.

Thank you,

*Heidi Kunz*

# SEPTEMBER

*Dates To Remember*

**9/26/25- Half Day**

**11:00 AM Dismissal**

**Parent Communication Day**

**9/29/25- Picture Day**

# **Bagel Days**

**Wednesday, September 24th**

**Friday, October 10th**

**Wednesday, October 22nd**







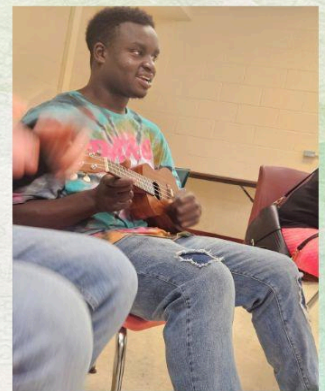
JARDON ASD STUDENTS  
AT  
BEACON PARK







# FAR Therapy MUSIC







**Jardon MoCI Community-Based Instruction for the Upcoming Week:**

Monday- 9/22- P.M. - Walmart

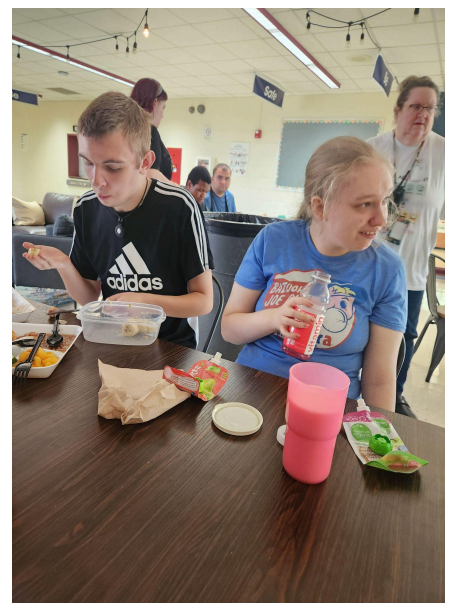
Thursday- 9/25- P.M.- Hobby Lobby

**Jardon ASD Community-Based Instruction for the Upcoming Week:**

Monday - 9/22- P.M. - Kroger

Thursday- 9/25- P.M.- Dequindre Cut Walkway

(All CBI locations are subject to change due to weather etc.)





# NEWS FROM NURSE STEPHANIE

## PARENTS AND GUARDIANS,

Up next - our “*Medication Intake Forms*” are now **“MEDICATION INVENTORY FORMS”**!

One Medication Inventory Form will be designated for each medication your student keeps at school.

*\*This two-sided form specifies which medication and how much of it is being delivered (or returned). See the sample form following this page!\**

If you bring your student’s medications directly to school, in person, an inventory form will be filled out at the time of drop-off or pick-up.

For those who send medication in with their students, the inventory form will be filled out and sent home for you to confirm and sign, and return the next school day.

Please take a moment to review the district’s medication administration policy, which is summarized on this form, as well.

**THANK YOU** for partnering with us to keep our students safe!

Nurse Stephanie  
248-658-5956  
[stephanie.fowlereagan@myhpsd.org](mailto:stephanie.fowlereagan@myhpsd.org)



## MEDICATION INVENTORY FORM

Both sides of this form must be completed and updated by a parent/guardian **EACH TIME** medication is delivered to the school.

Student Name: Leia Organa	School: Jardon Vocational School
Parent/Guardian Names: Bail Organa Breha Organa	
Medication Name: AirSupra (albuterol and budesonide)	
Medication form (tablet, capsule, mL, inhaler): inhaler	Strength per unit (e.g. 10 mg per tablet): 90 mcg / 80 mcg per inhalation

By signing, I confirm that I understand and will abide by the school district's medication administration policy summarized below:

- Per district policy, un expired medication must be delivered in the original container. We are unable to accept loose medication (e.g. in ziploc bags) and we are not able to add loose medication to an existing container.
- Prescribed medication must come in the original container from the pharmacy with a pharmacy label that matches the written order from the health care provider.
- If these conditions are not met, the school is unable to dispense the medication. Parents/guardians are able to administer the medication to their students while in school.
- Medication that is not picked up by the end of the school year will be discarded. The school does not store medication over the summer.
- Medication without written authorization from the HCP and parent/guardian will not be administered.

Date: 09.02.2025	Signature: <i>Bail Organa</i>	Parent Initials: <i>B.O.</i>
Date: <i>9/2/2025</i>	Signature: <i>Breha Organa</i>	Parent Initials: <i>B.O.</i>

SEE BACKSIDE OF THIS FORM



Date	Medication Action D= delivered to school R= returned to family	Quantity	Expiration Date of Medication	Parent Initials	DSP/RN Initials	Med Auth on file?
9.2.2025	D	one inhaler	8.26.2026	OK	OK, RN	N
9-3-2025	Med Auth Provided	—	—	BO	OK, RN	Y
12/19/2025	R	one inhaler	8-26-2026	BO	A.T. DSP	Y
1.5.2026	D	one inhaler	8.26.2026	OK	A.T. DSP	Y

9-2-2025 Obi W. Kenobi, RN Obi W. Kenobi, RN OK  
 12-19-2025 Ahsoka Tano, DSP Ahsoka Tano, DSP A.T.

## *Just From Jessi Transition Coordinator*

Rotation 1 of work based learning is in full swing as we completed our first week on the job! A HUGE thank you to our job coaches that worked hard to make these job sites come to life. It is thanks to them that we are able to have so many meaningful sites throughout our district and in our community.

Here are some pictures of our workers with Chartwells at Webb and Hazel Park High School:



Please be sure to return any work based learning agreements ASAP (if you have not already done so) so that your student can participate in these opportunities. Work reports are sent home every 2 weeks, the first set of reports will be sent home next week from your student's caseload teacher. If you have any questions or concerns about work based learning, please reach out to me!

## Resource Feature:



Michigan Alliance for Families provides free workshops for families of children and youth with disabilities, and those who support them.

Our full calendar of online learning opportunities for the upcoming 2025-2026 school year is now available!

We are excited to offer several new special education workshop topics this year, along with "IEP: A Closer Look" every month.

Mark your calendars, get registered, come learn with us!

[2025-2026 Virtual Learning Calendar](#)

Jessi Haines  
Jardon Transition Coordinator  
Hazel Park School District  
(248) 658 - 5958  
[jessica.haines@myhpsd.org](mailto:jessica.haines@myhpsd.org)



**Resource Feature:**

**MiABLE** (Michigan Achieving a Better Life Experience) enables individuals with disabilities and their families to save for expenses while maintaining their eligibility for crucial government benefits like Medicaid and SSI. This tax-advantaged savings program offers both flexibility and independence – benefits that could transform the financial future of many in your community.

*You, your colleagues, people with disabilities and their loved ones are invited to an upcoming event that MiABLE is partnering with Oakland Community Health Network at the end of September!*

This session will feature:

- A powerful testimonial from a current MiABLE account owner
- Insights from our host partner, Oakland Community Health Network
- Presentation by MiABLE's Program Director, Scott de Varona. Scott will cover what MiABLE is and how simple it is to set up an account
- Hands-on assistance: Computers will be available afterwards for anyone ready to open an account

**Mark your calendar!**

**Date:** Wednesday, September 24

**Time:** 10:00 am – 12:00 pm

**Location:** Oakland Community Health Network

5505 Corporate Drive, Troy, MI 48098



# MiABLE

INVEST • SAVE • SPEND

## Interested in MiABLE? Now's your chance!

Join Scott de Varona, MiABLE executive director, while he explains how you can take advantage of the MiABLE 529 savings program.

Ask questions directly to our staff and find out what MiABLE is, how it works, how to use it and so much more!

**Join us on Wed., Sept. 24**

10 a.m.-1 p.m.  
5505 Corporate Drive,  
Troy, MI



Scan here to  
learn more  
and RSVP!

[www.MiABLE.org](http://www.MiABLE.org)

Ed Lofton and his  
mother, Joanna Lofton,  
Account Owner



# September 2025

## Jardon Vocational School Lunch

MONDAY	TUESDAY	WEDNESDAY	THURSDAY	FRIDAY
<b>1</b>	<b>2</b>	<b>3</b>	<b>4</b>	<b>5</b>
	Lunch • Walking Beef Taco • BLT Burger • Wowbutter & Jelly Sandwich Fun Lunch	Lunch • Mashed Potato & Chicken Bowl • Turkey Ham & Cheese Bagel Melt • Popcorn Chicken Salad • Flatbread Pieces	Lunch • Cheesy Italian Pull Apart • Beef Hot Dog on Whole Wheat • Cheez-Its, Cheese, & Grapes Fun Lunch	Lunch • Whole Grain French Toast Sticks • Chicken Sausage Patty • Cheese Pizza • Wowbutter & Jelly Sandwich Fun Lunch
<b>8</b>	<b>9</b>	<b>10</b>	<b>11</b>	<b>12</b>
Lunch • Sweet & Sour Chicken • Cheese Stuffed Breadsticks • Wowbutter & Jelly Sandwich Fun Lunch	Lunch • Beef Taco Meat • Turkey Ham & Cheese Sandwich • Muffin, Yogurt & Cheese Fun Lunch	Lunch • Chicken Tenders • Classic Hamburger • Popcorn Chicken Salad • Flatbread Pieces	Lunch • Mini Cheese Ravioli with Marinara Sauce • BBQ Pulled Pork Sandwich • Cheez-Its, Cheese, & Grapes Fun Lunch	Lunch • Whole Grain Pancake Bites • Chicken Sausage Patties • Cheese Pizza • Wowbutter & Jelly Sandwich Fun Lunch
<b>15</b>	<b>16</b>	<b>17</b>	<b>18</b>	<b>19</b>
Lunch • Sweet & Sour Chicken Meatballs • Grilled Chicken Sandwich • Wowbutter & Jelly Sandwich Fun Lunch	Lunch • Beef Nachos • Turkey Ham & Cheese Bagel Melt • Cheez-Its, Cheese, & Grapes Fun Lunch	Lunch • Boneless Chicken Wings • Bacon Cheeseburger • Popcorn Chicken Salad • Flatbread Pieces	Lunch • Mini Turkey Corn Dogs • Cheesy Italian Pull Apart • Muffin, Yogurt & Cheese Fun Lunch	Lunch • Whole Grain French Toast Sticks • Chicken Sausage Patties • Cheese Pizza • Wowbutter & Jelly Sandwich Fun Lunch
<b>22</b>	<b>23</b>	<b>24</b>	<b>25</b>	<b>26</b>
Lunch • Chicken & Vegetable Dumplings • Fiestada Pizza • Wowbutter & Jelly Sandwich Fun Lunch	Lunch • Baja Beef Rice Bowl • Cheese Stuffed Breadsticks • Muffin, Yogurt & Cheese Fun Lunch	Lunch • Macaroni and Cheese • Classic Cheeseburger in Bun • Popcorn Chicken Salad • Flatbread Pieces	Lunch • BBQ Pulled Pork Sandwich • Chicken Patty • Cheez-Its, Cheese, & Grapes Fun Lunch	
<b>29</b>	<b>30</b>			
Lunch • Teriyaki Glazed Chicken • Grilled Chicken Sandwich • Muffin, Goldfish & Yogurt Fun Lunch	Lunch • Walking Beef Taco • BLT Burger • Wowbutter & Jelly Sandwich Fun Lunch			

If you have a food allergy or intolerance, please notify us. Ask your cafeteria manager if changes were made to today's menu so we can help keep you safe!

**Menus Subject to Change** We try our best to serve our menus as posted; however, sometimes last minute changes occur. Please check with the cafe manager prior to the meal if you have any concerns.

USDA is an equal opportunity provider, employer, and lender. Layout & Design © Nutrislice, Inc. Printed on 8/28/2025 at 11:29 am .



**HAZEL PARK  
SCHOOLS**





**Hazel Park Schools  
Administration Building**  
1620 E. Elza Hazel Park



**Distribution Dates Are Fridays (*unless in bold*) beginning at 9:30 am unless noted**

---

October 17, 2025	January 16, 2026	April 17, 2026	July 17, 2026
November 14, 2025	February 13, 2026	May 15, 2026	Aug. 14, 2026
December 12, 2025	March 13, 2026	June 12, 2026	Sept. 11, 2026

---

**The food goes very quickly, so please come early to get in line.**

Hazel Park Schools has partnered with Gleaners Community Food Bank to bring the School Mobile Food Pantry to our students and their families. ***Food distributions per family total 36 lbs of food which includes milk, lean meats, fresh fruits, vegetables, and dry goods every month.***

Please line up in your car in the parking lot, going down Elza in front of the school. **Please do not block any driveways and be sure to line up along the curb to avoid blocking the road.** We appreciate your cooperation in this matter out of respect and safety for our neighbors.

Here are a few **NEW RULES** and procedures provided by Gleaners: 1. Food pickup line will **NOT** begin until 9:30 am; 2. Walk ups **CANNOT** receive food until 10 am (30 minutes after the line has begun); 3. Food will **ONLY** be distributed for 1 hour, our distribution will end at 10:30 am; 4. You must be present with your card, no pickups or delivery allowed; 5. No more than 6 servings per car; 6. Staff must come through the line in their vehicle or wait until all the cars have been processed; 7. We are now required to ask for your income and/or program you are enrolled in (ex. SNAP Benefits); 8. We **CANNOT** hold food for families, it must be obtained during the Gleaners distribution; 9. We will **NEVER** ask for a driver's license; 10. Any remaining food will be sent back to Gleaners.

Please have your Gleaners card ready when you arrive. If you are new to Gleaners and do not have a card, you will be asked to fill out a form with your information as well as information for those in your household.

Gleaner's information will be sent by email and voice messages as reminders when you sign up for communications through your children's school.

Sign up for communications may be done through your Parent Portal on PowerSchool or the school district website, [www.hazelparkschools.org/parents/resources--quick-links](http://www.hazelparkschools.org/parents/resources--quick-links), then click on Alert Sign up.

Contact your Community Representative to help your family with resources for things such as bill pay, eyeglasses, local food pantries, and other resources. We want to make sure that all the needs of our students are addressed to the best of our abilities.

Gleaners Mobile School Pantry Site Coordinators: **Jamie Buczko, Administrative Assistant to the Superintendent, (248) 658-5220, [jamie.buczko@myhpsd.org](mailto:jamie.buczko@myhpsd.org), or Nancy Anderson - Human Resource Specialist, (248) 658-5201, [nancy.anderson@myhpsd.org](mailto:nancy.anderson@myhpsd.org)**

**This institution is an equal opportunity provider.**

